

# 琅琊

**Robert Edson Swain, AIA**  
规划建筑  
Planning Architect

**Robert Klengler**  
责任编辑  
Managing Editor

**Geoffrey Casey**  
图  
Graphic Design

**Neal Panchuk**  
3D模型  
3D Modeling

# 琅琊 LANG YA

一个可持续发展的明天、一个繁荣兴旺的未来

**A SUSTAINABLE AND PROSPEROUS FUTURE**

青岛市规划局给了我们一次机会参与青岛卫星城镇—琅琊

组团的总体规划,我想在此表示感谢。我对夏耕市长和市政

府领导关于建设生态型可持续发展的青岛的远见卓识深感

赞同和钦佩。青岛市致力于对历史遗迹、环境、自然景观

的保护和综合管理,以及在可持续发展方面的投入和所取得

进展,令人惊叹不已。这一切都为我们“认真思索、细心体

会、准确定位、富有灵感”的设计创作埋下伏笔。它也将

深深地激励着我为青岛市的宏伟发展蓝图贡献我的才智。



I wish to thank the Qingdao Urban Planning & Program-

ming Bureau for this opportunity to participate in this

transformation of Qingdao Satellite City Group — Lang

Ya. I deeply value, respect and appreciate Mayor Xia

Geng's central leadership and powerful vision towards

an ecological and sustainable Qingdao! The commit-

ment to a balance of historic preservation, environ-

mental concern, landscape beauty and phenomenal

progress in sustainable development is remarkable.

The knowledge, experience and insights of my visits

to Qingdao has prompted me to offer these concepts

to facilitate your rapid growth.

咨询师  
**Advisors**

**Antonio Apicella**, Ph.D.,  
University of Naples, Italy

**Leigh Bloom**, EDGE, Ilc,  
Seattle, WA, USA

**Stefano Catalani**, Art  
Curator, Seattle, WA, USA

**Susan Corcos**, President,  
FREEDOM, Athens, Greece

**D. Gregg Doyle**, Ph.D., AICP,  
Cal Poly State University, USA

**Weihe Guan**, Weyerhaeuser,  
Tacoma, WA, USA

**John Scott Lee**,  
Skagit County, WA, USA

**Wesley Pierce**, EDGE, Ilc,  
Seattle, WA, USA

**John Sands**, Entrepreneurial  
Studies, WWU, USA

**Ming-Lee Yuan**, EDGE, Ilc,  
Seattle, WA, USA

**Yegang Wu**, Eden  
Development, Qingdao, China

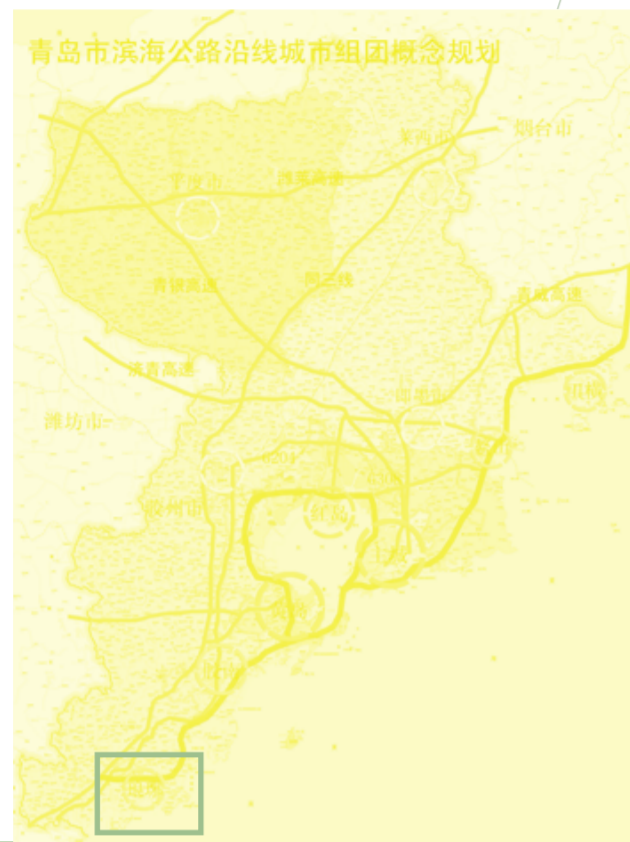
研究助理  
**Research Assistant**

**Brendon Haggerty**, UW,  
Seattle, WA, USA

翻译服务  
**Translation Services**

**Daniel Fan Baocai**,  
Qingdao, China

**Weihe Guan**, Weyerhaeuser  
Tacoma, WA, USA



焦点1: 琅琊旅游公园	1 Focus 1: Lang Ya Tourism Park
焦点1: 用地指标及控规图	1 Focus 1: Planned Land Use
焦点1: 空间景观分析图	2 Focus 1: Spatial Landscape
焦点1: 绿化系统分析图	2 Focus 1: Green Space
焦点1: 代表设计构思和创意的效果图	3 Focus 1: Design Models
焦点2: 水晶城	5 Focus 2: Crystal City
焦点2: 用地指标及控规图	5 Focus 2: Planned Land Use
焦点2: 空间景观分析图	6 Focus 2: Spatial Landscape
焦点2: 绿化系统分析图	6 Focus 2: Green Space
焦点2: 代表设计构思和创意的效果图	7 Focus 2: Design Models
焦点4: 琅琊镇	9 Focus 4: Lang Ya Town
焦点4: 用地指标及控规图	9 Focus 4: Planned Land Use
焦点4: 空间景观分析图	9 Focus 4: Spatial Landscape
焦点4: 绿化系统分析图	10 Focus 4: Green Space
焦点4: 代表设计构思和创意的效果图	11 Focus 4: Design Models
焦点7: 农业, 工业和农业旅游业	13 Focus 7: Farming, Industry and Agri-Tourism
焦点7: 用地指标及控规图	13 Focus 7: Planned Land Use
焦点7: 空间景观分析图	13 Focus 7: Spatial Landscape
焦点7: 绿化系统分析图	14 Focus 7: Green Space
焦点7: 代表设计构思和创意的效果图	15 Focus 7: Design Models
参考书目	17 Bibliography

目录  
Contents

每个灵魂都会为自己建个家,而在这个家的外面是一个世界,在世界的外面是天堂。要知道这个世界是为你而存在的,因此,建一个你所拥有的世界吧。

腊甫·瓦杜·厄姆森。

*Every spirit builds itself a house, beyond its house a world, beyond its world a heaven. Know there that the world exists for you – build therefore your own world.*

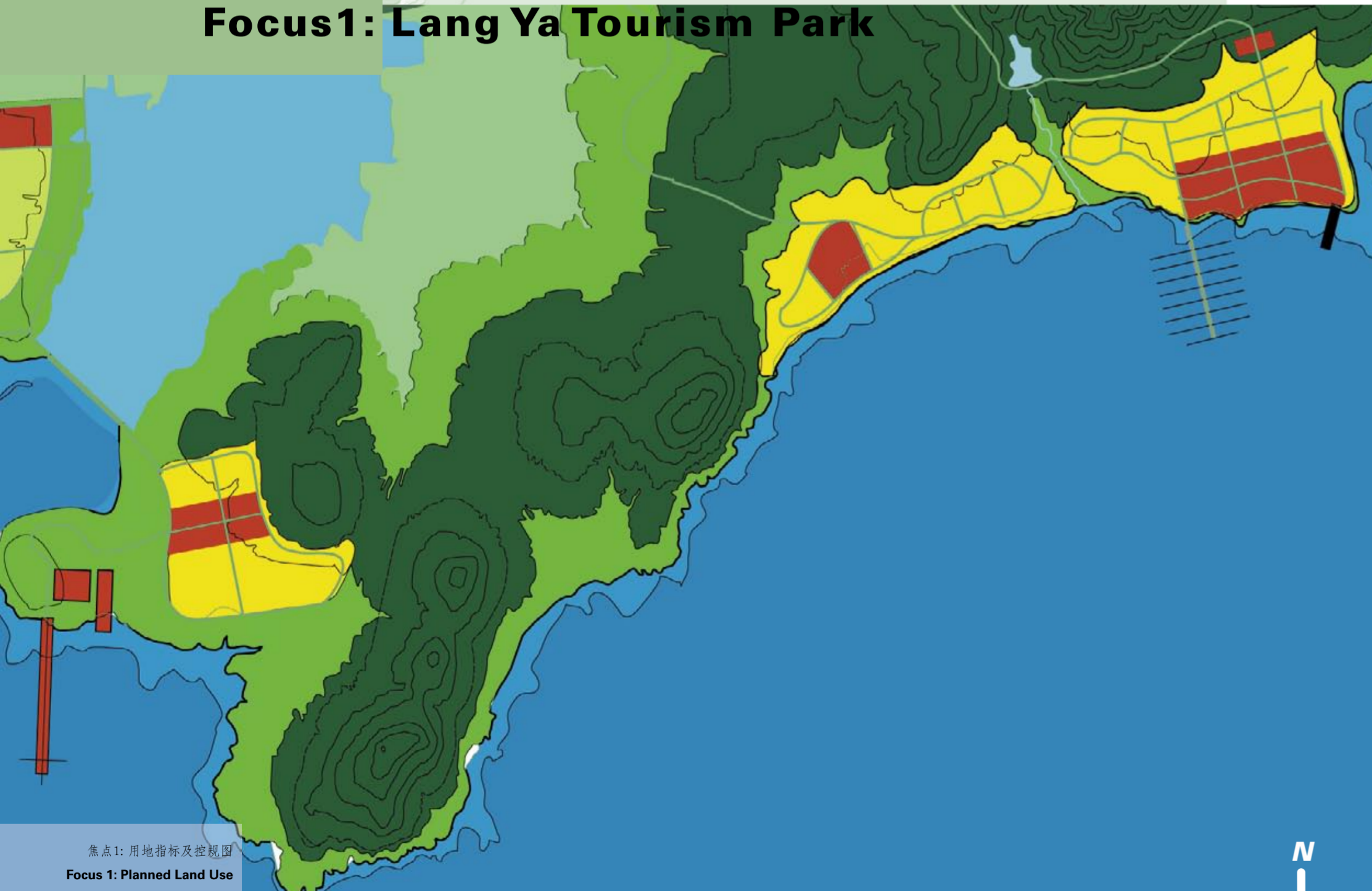
**Ralph Waldo Emerson**



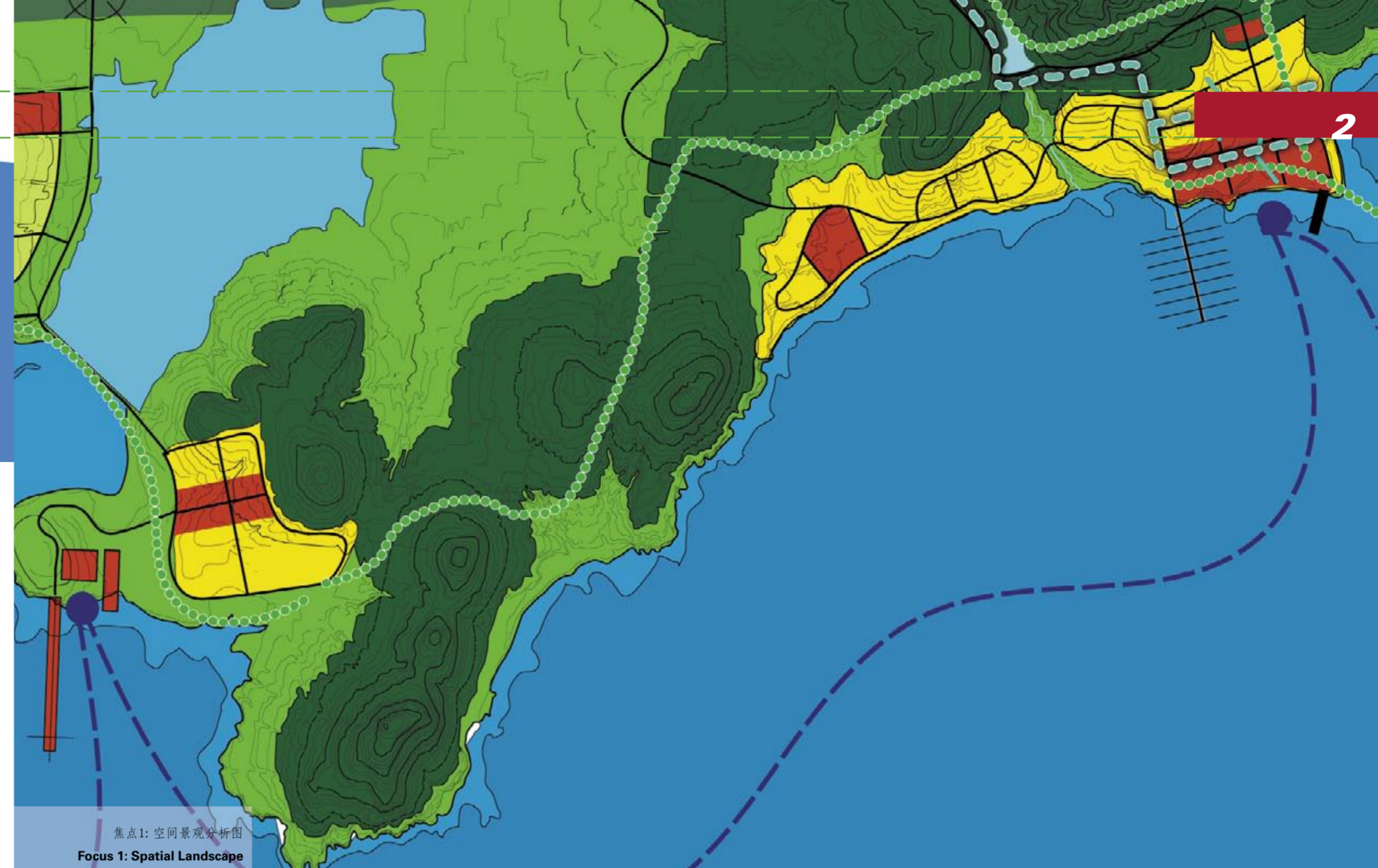


# 焦点 1: 琅琊旅游公园

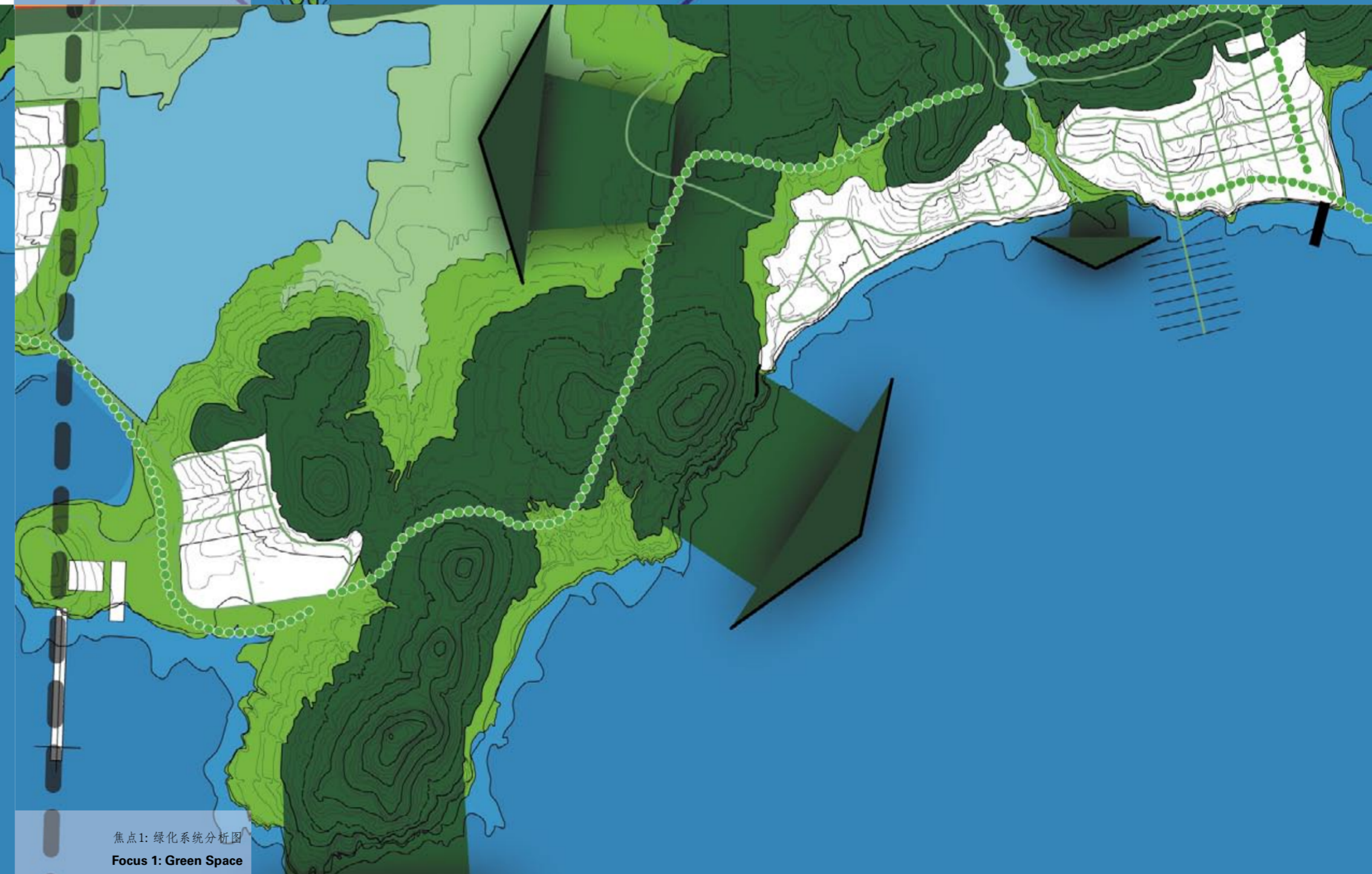
## Focus 1: Lang Ya Tourism Park



焦点1: 用地指标及控规图  
Focus 1: Planned Land Use

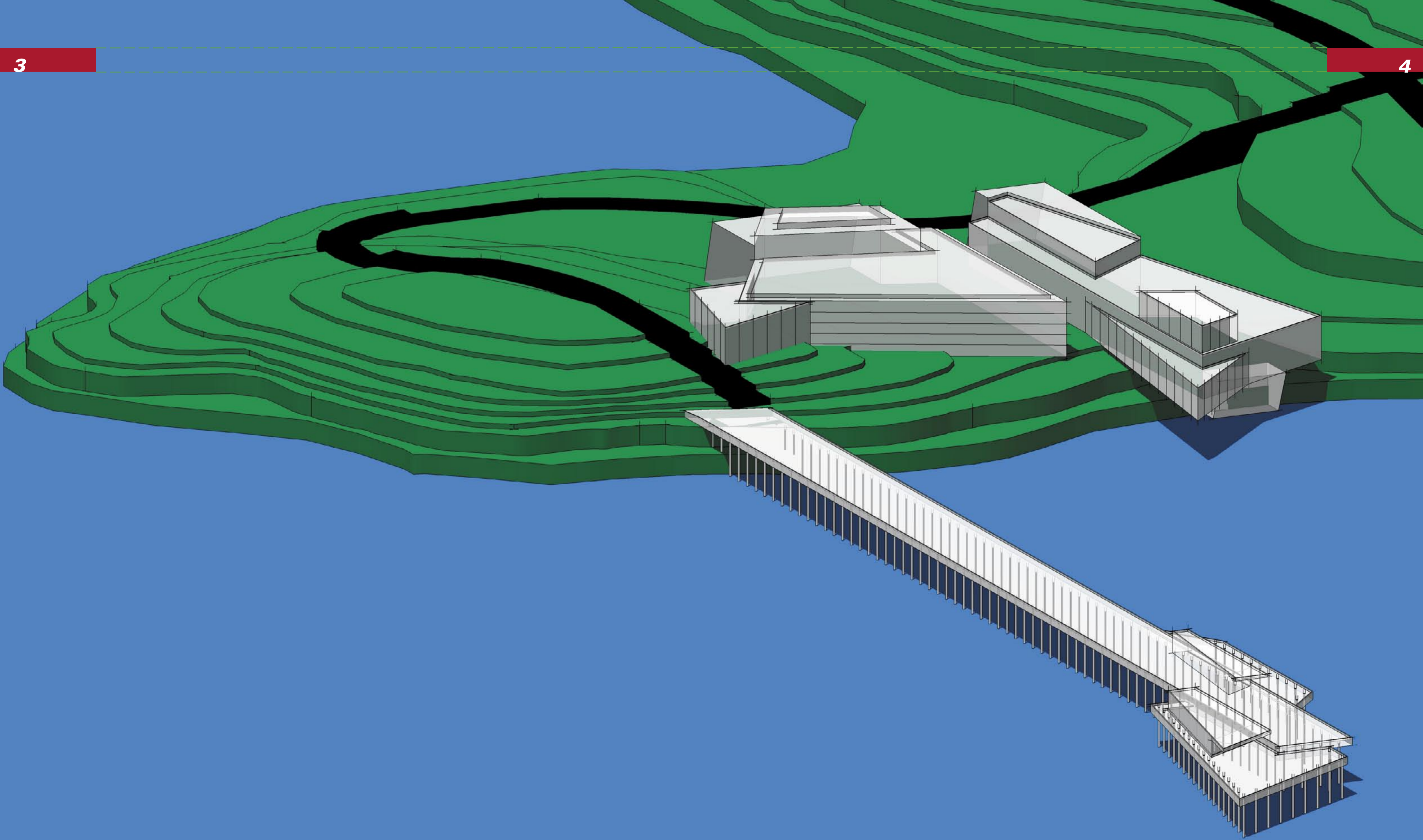


焦点1: 空间景观分析图  
Focus 1: Spatial Landscape



焦点1: 绿化系统分析图  
Focus 1: Green Space





1:1000

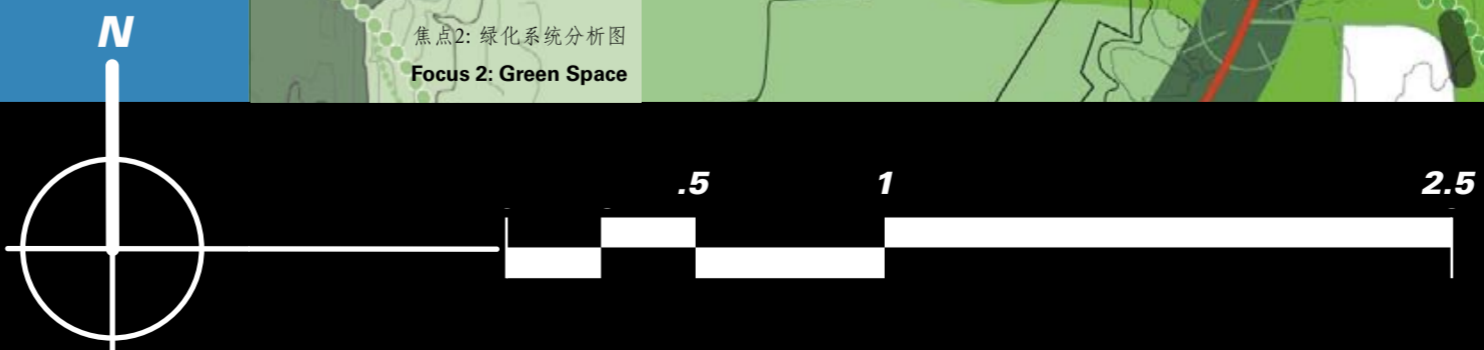
焦点1: 代表设计构思和创意的效果图

Focus 1: Design Model

ROBERT  
EDSON  
SWAIN  
A I A



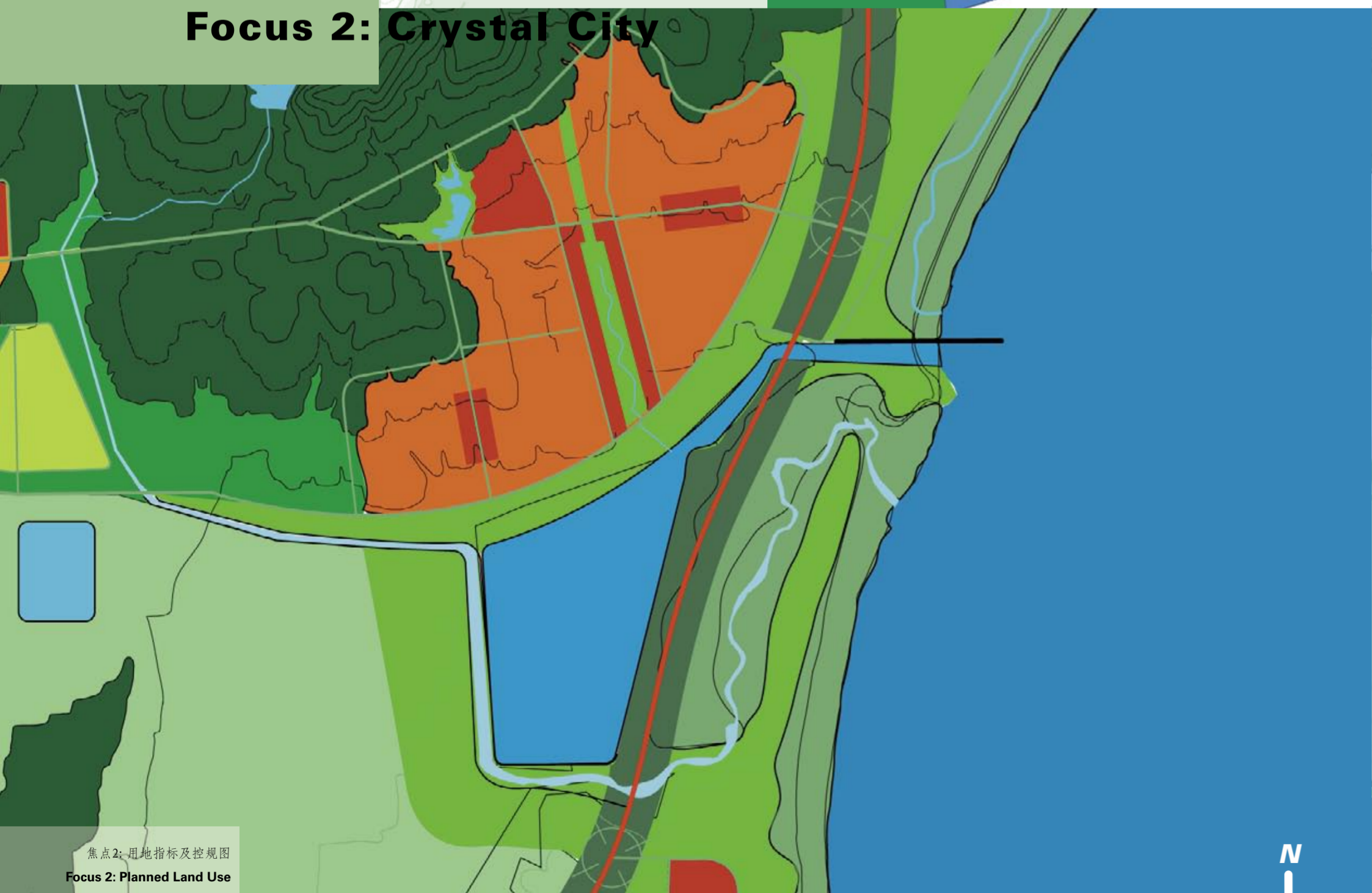
焦点2: 空间景观分析图  
Focus 2: Spatial Landscape



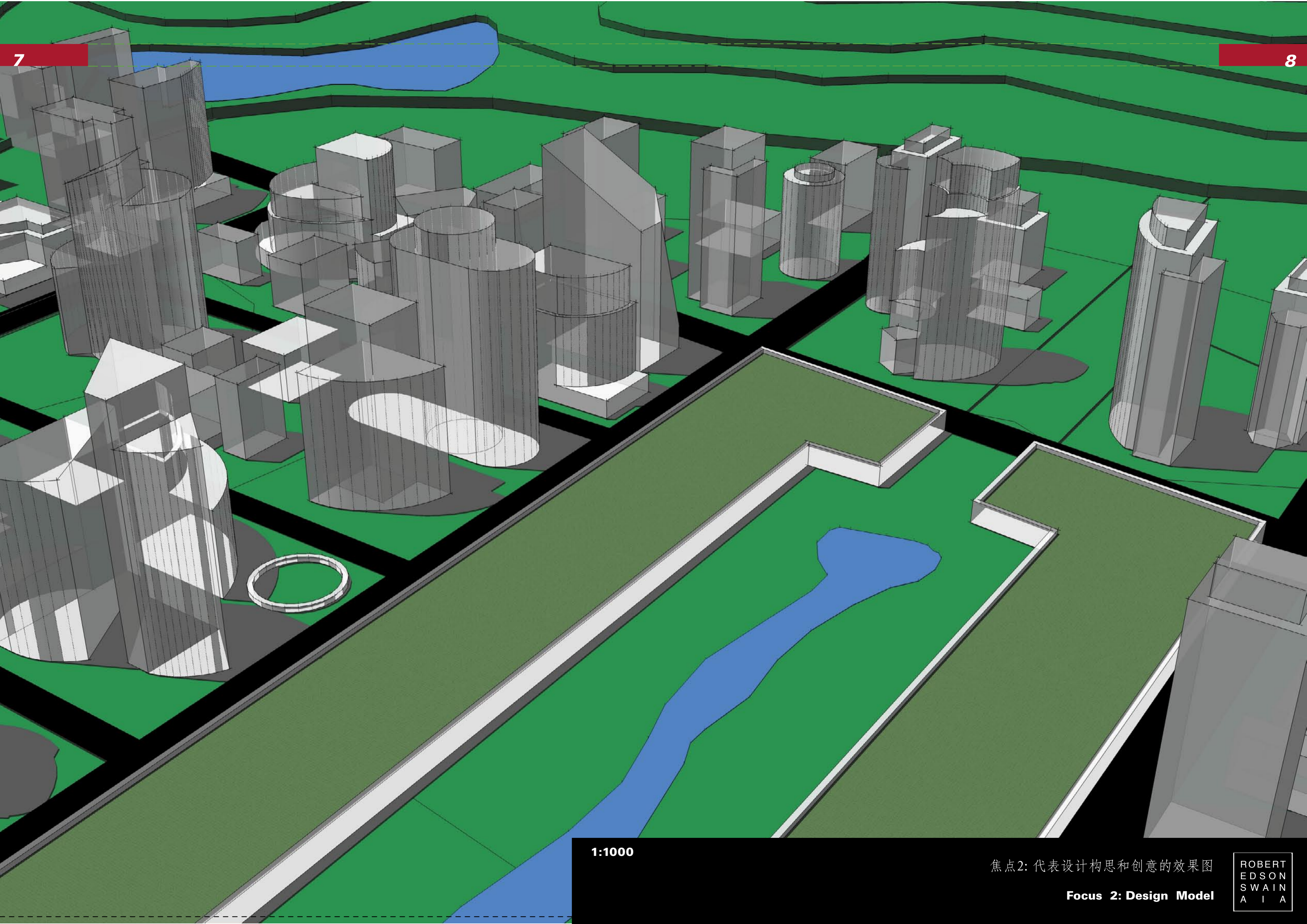
焦点2: 绿化系统分析图  
Focus 2: Green Space

- |  |                               |  |                                      |
|--|-------------------------------|--|--------------------------------------|
|  | 自行车道/步行道<br>Bikepath/Walkway  |  | 高密度旅游区<br>High Density Tourism       |
|  | 公共交通A<br>Mass Transit A       |  | 中密度旅游区<br>Med. Density Tourism       |
|  | 公共交通B<br>Mass Transit B       |  | 低密度旅游区<br>Low Density Tourism        |
|  | 公共交通C<br>Mass Transit C       |  | 工业<br>Industrial                     |
|  | 地区轮渡码头<br>Regional Ferry      |  | 大山和原野<br>Mountains & Wilderness      |
|  | 当地轮渡<br>Local Ferry           |  | 旅游绿地<br>Green Land For Tourism       |
|  | 道路<br>Roads                   |  | 工业绿地<br>Industrial Green Land        |
|  | 滨海公路<br>Coastal Road          |  | 公共住宅绿色园区<br>Public Green Residential |
|  | 同三高速公路<br>Tongsan Expressway  |  | 生态绿地和农田<br>Bio-Eco Green & Farmland  |
|  | 铁路<br>Railroad                |  | 空地<br>Vacant Land                    |
|  | 公共设施<br>Public Infrastructure |  | 沙滩<br>Beach                          |
|  | 高密度住宅<br>High Density Housing |  | 湖泊和河流<br>Lakes and Rivers            |
|  | 中密度住宅<br>Med. Density Housing |  | 潮间区<br>Intertidal                    |
|  | 低密度住宅<br>Low Density Housing  |  | 海洋<br>Ocean                          |

## 焦点 2: 水晶城 Focus 2: Crystal City



焦点2: 用地指标及控规图  
Focus 2: Planned Land Use



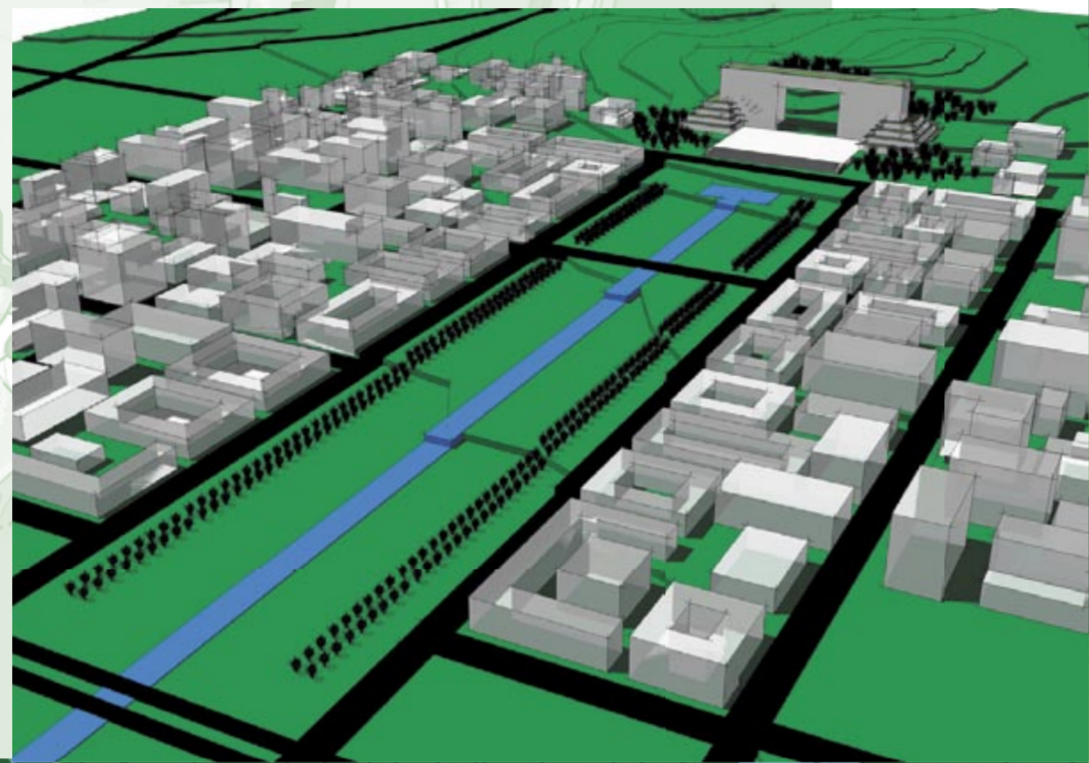
1:1000

焦点2: 代表设计构思和创意的效果图

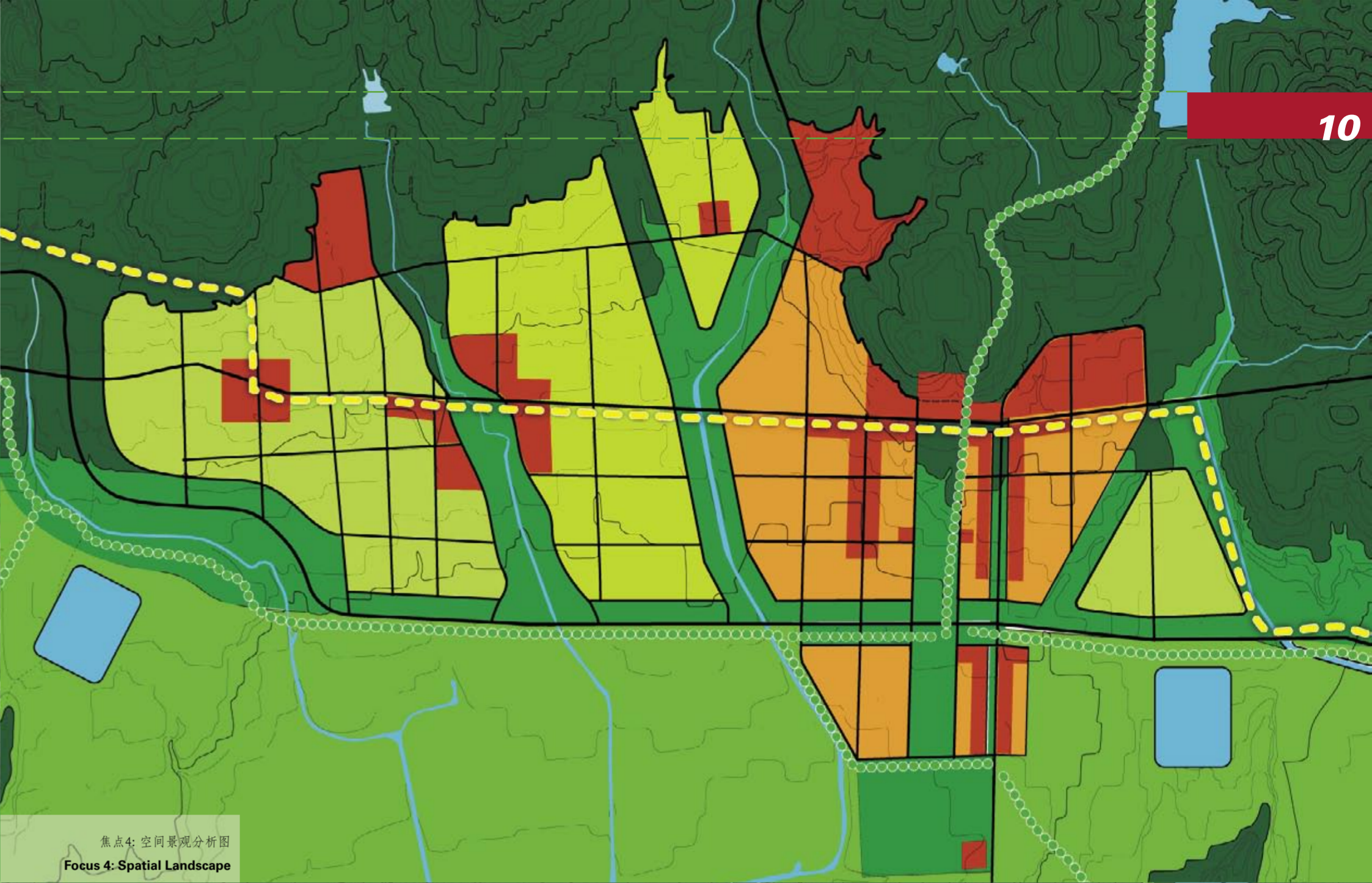
Focus 2: Design Model

ROBERT  
EDSON  
SWAIN  
A I A

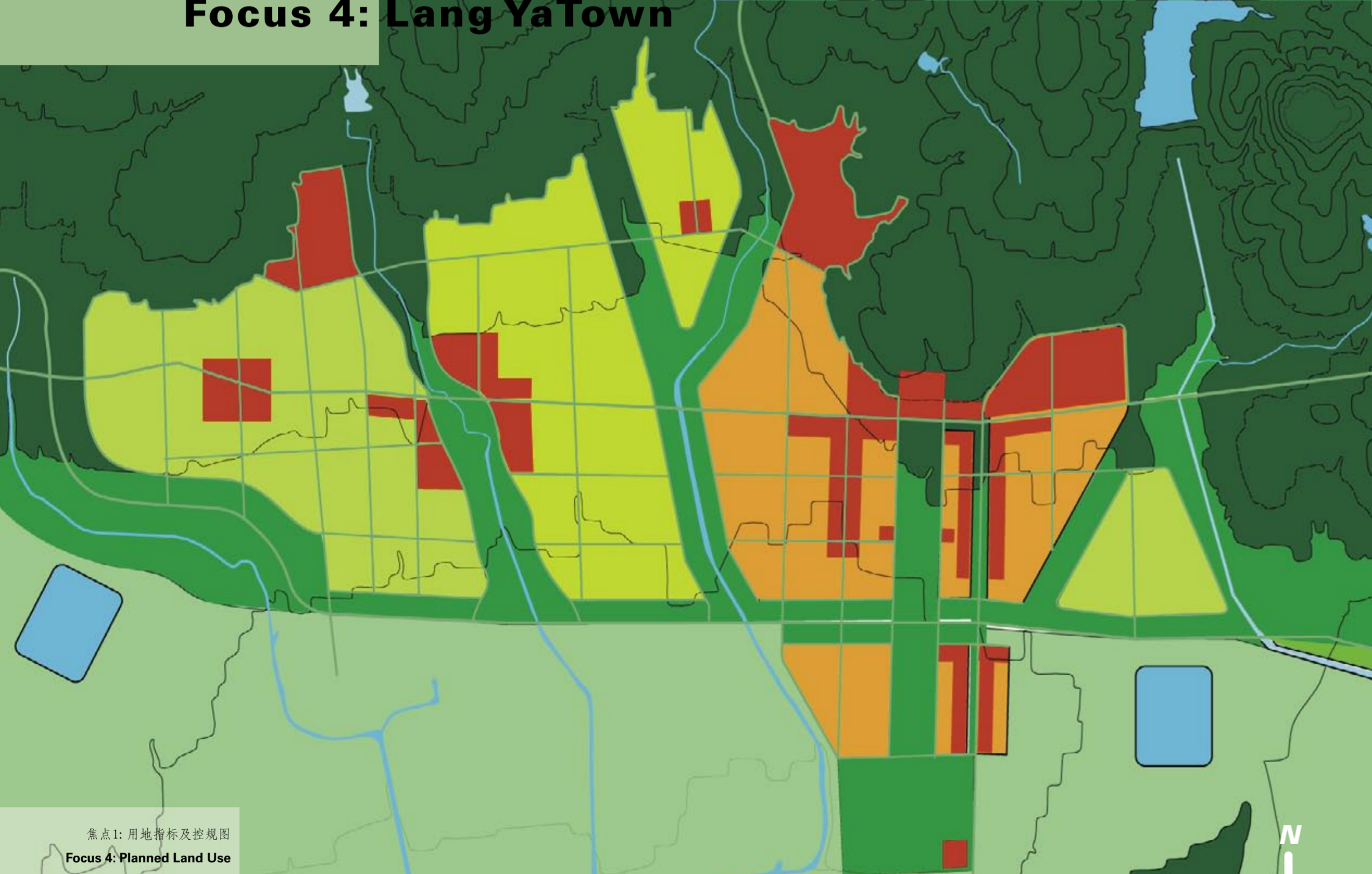
- 自行车道/步行道  
Bikepath/Walkway
- 公共交通A  
Mass Transit A
- 公共交通B  
Mass Transit B
- 公共交通C  
Mass Transit C
- 地区轮渡码头  
Regional Ferry
- 当地轮渡  
Local Ferry
- 道路  
Roads
- 滨海公路  
Coastal Road
- 同三高速公路  
Tongsan Expressway
- 铁路  
Railroad
- 公共设施  
Public Infrastructure
- 高密度住宅  
High Density Housing
- 中密度住宅  
Med. Density Housing
- 低密度住宅  
Low Density Housing
- 高密度旅游区  
High Density Tourism
- 中密度旅游区  
Med. Density Tourism
- 低密度旅游区  
Low Density Tourism
- 工业  
Industrial
- 大山和原野  
Mountains & Wilderness
- 旅游绿地  
Green Land For Tourism
- 工业绿地  
Industrial Green Land
- 公共住宅绿色园区  
Public Green Residential
- 生态绿地和农田  
Bio-Eco Green & Farmland
- 空地  
Vacant Land
- 沙滩  
Beach
- 湖泊和河流  
Lakes and Rivers
- 潮间区  
Intertidal
- 海洋  
Ocean



焦点 4: 琅琊镇  
Focus 4: Lang Ya Town



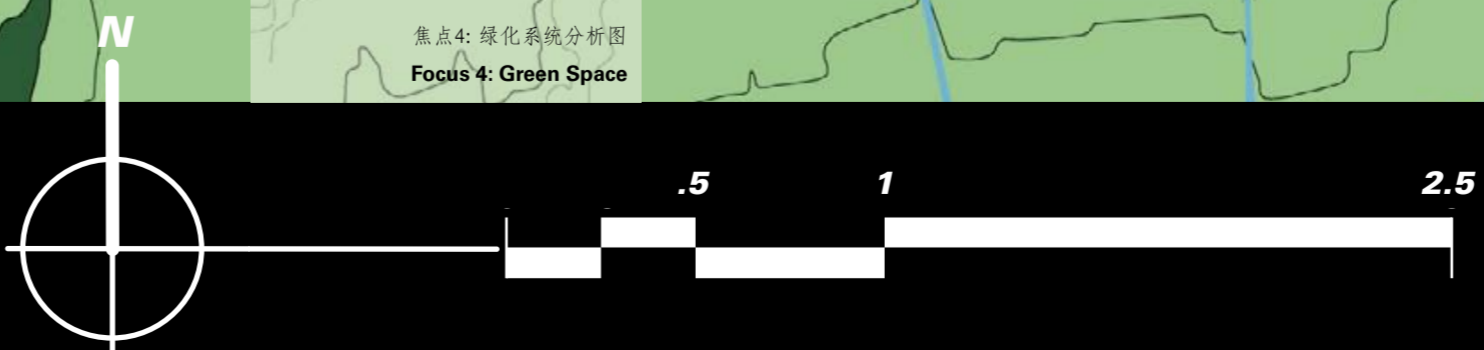
焦点4: 空间景观分析图  
Focus 4: Spatial Landscape

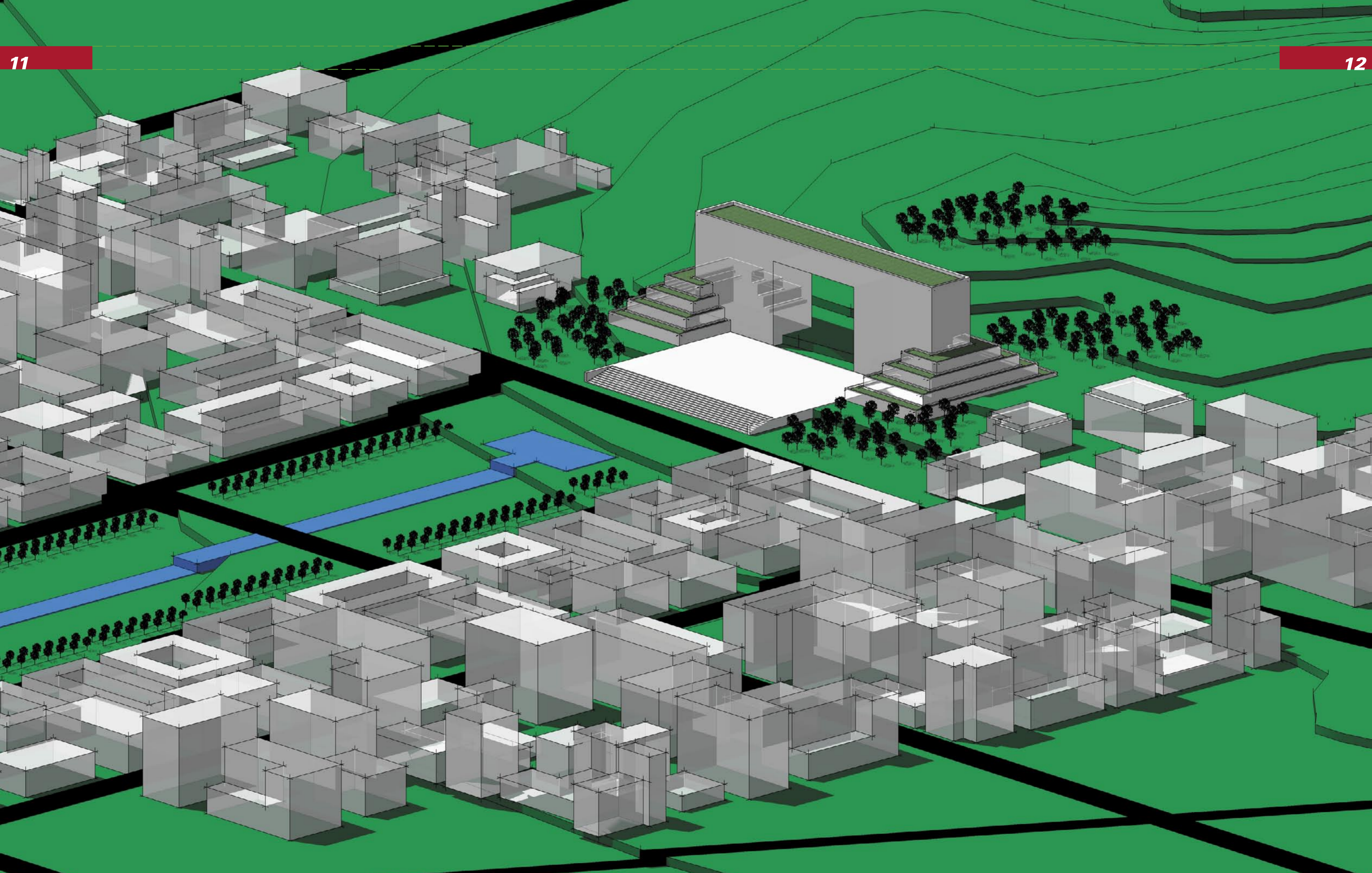


焦点1: 用地指标及控规图  
Focus 4: Planned Land Use



焦点4: 绿化系统分析图  
Focus 4: Green Space





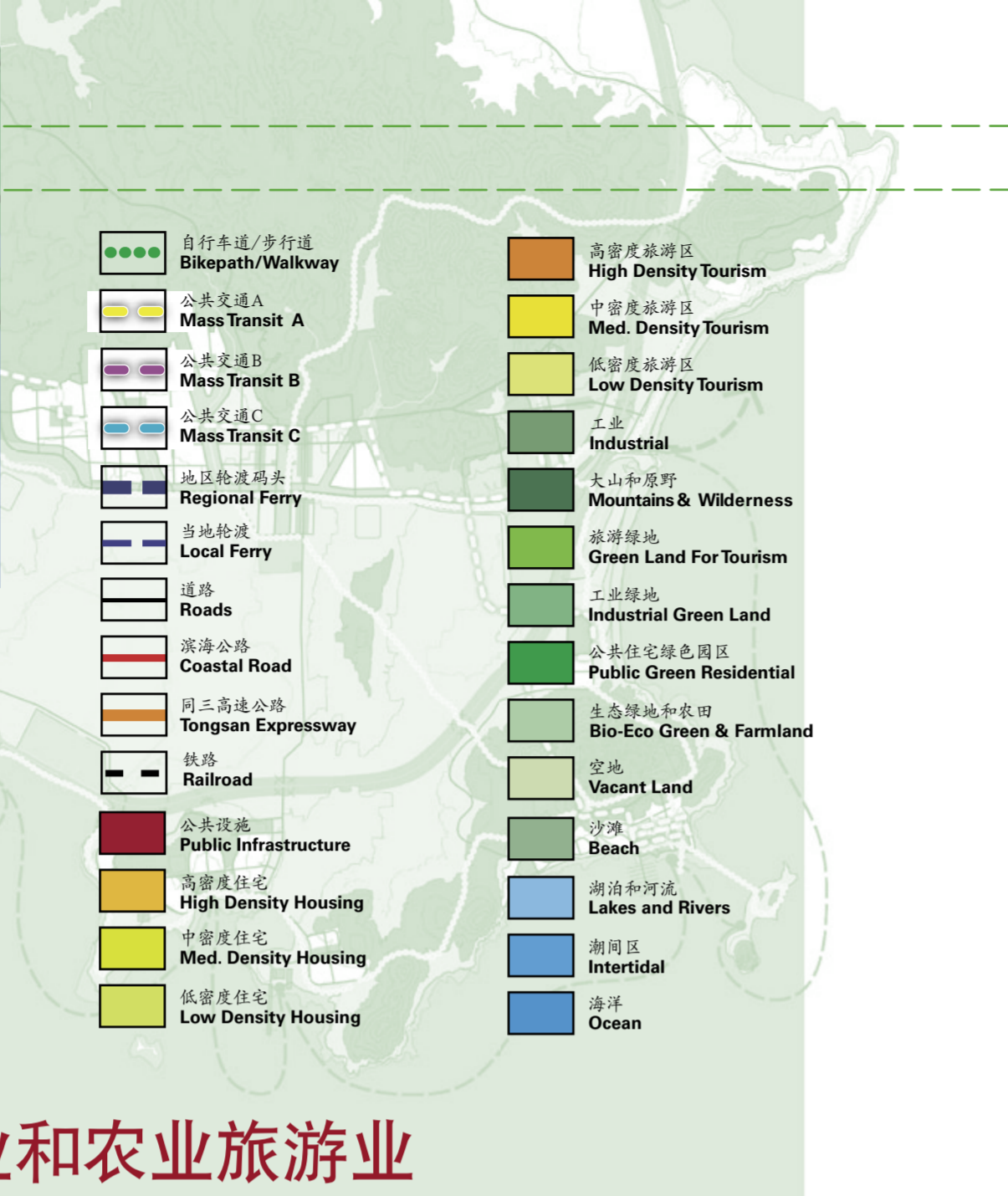
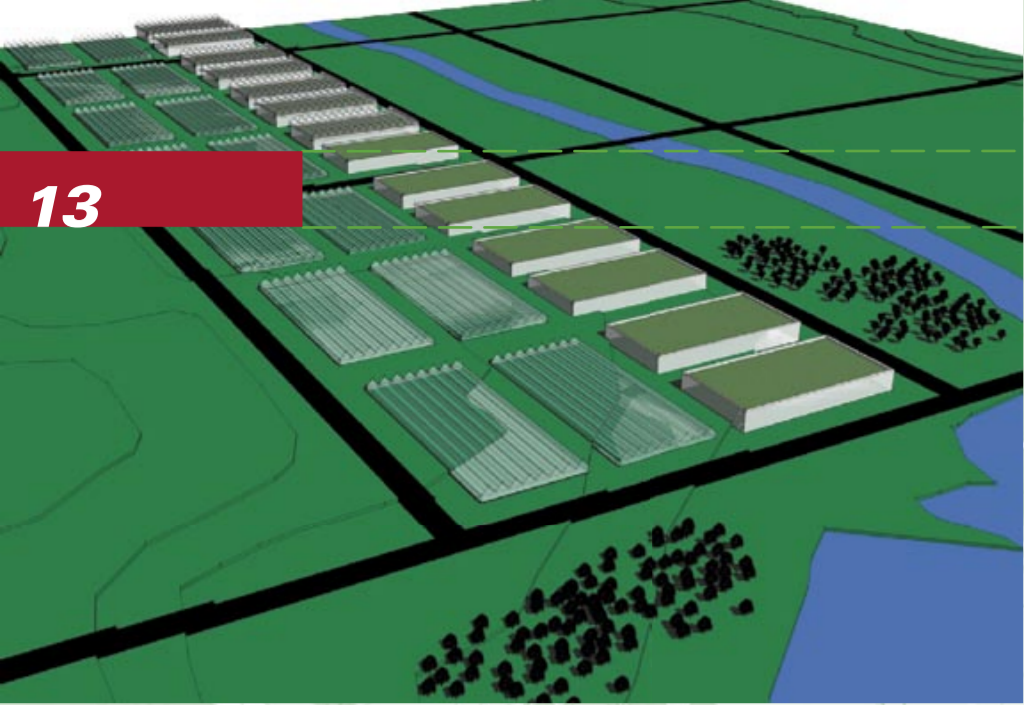
1:1000

焦点4: 代表设计构思和创意的效果图

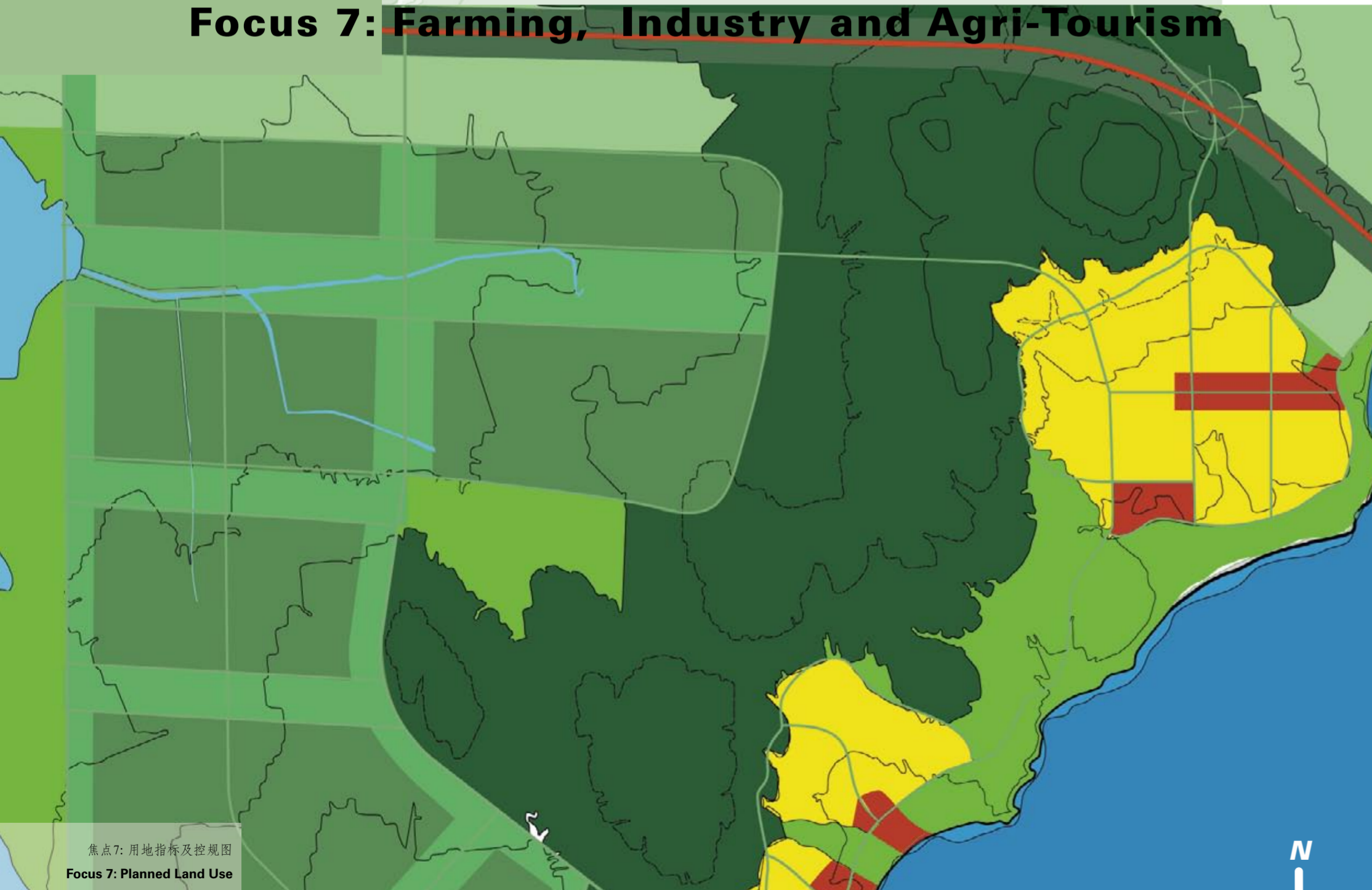
Focus 4: Design Model

ROBERT  
EDSON  
SWAIN  
A I A

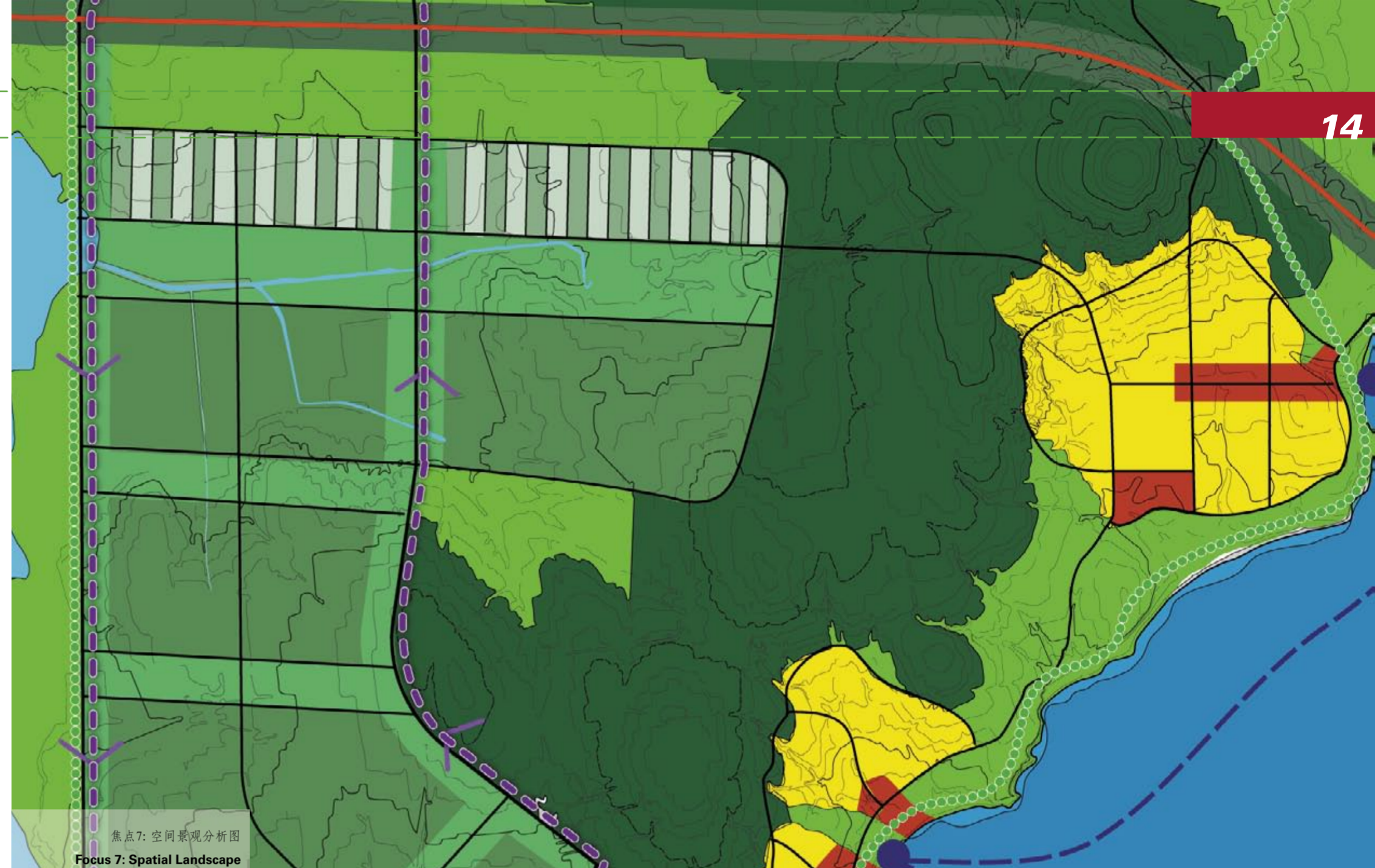




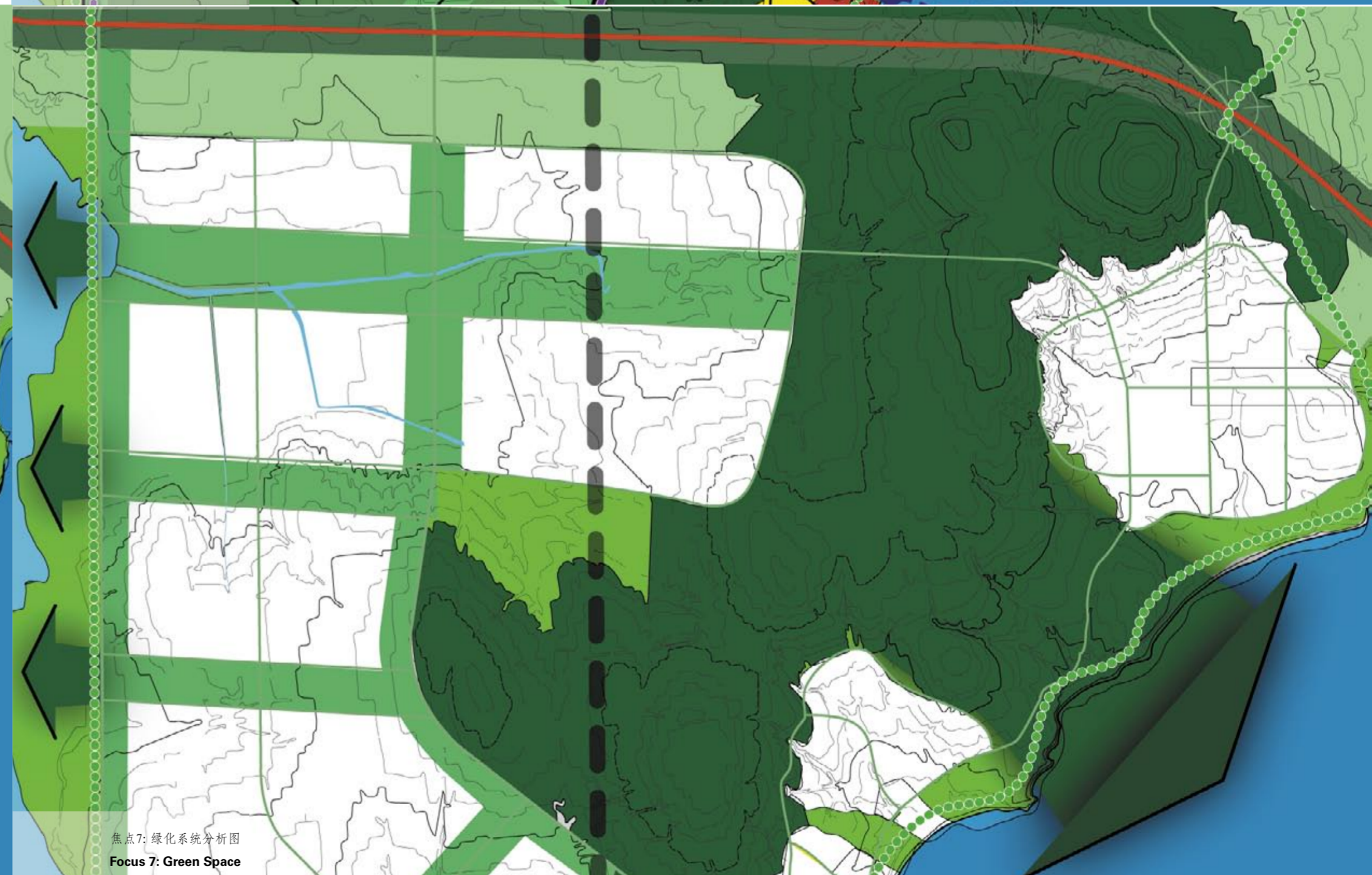
## 焦点 7: 农业、工业和农业旅游业 Focus 7: Farming, Industry and Agri-Tourism



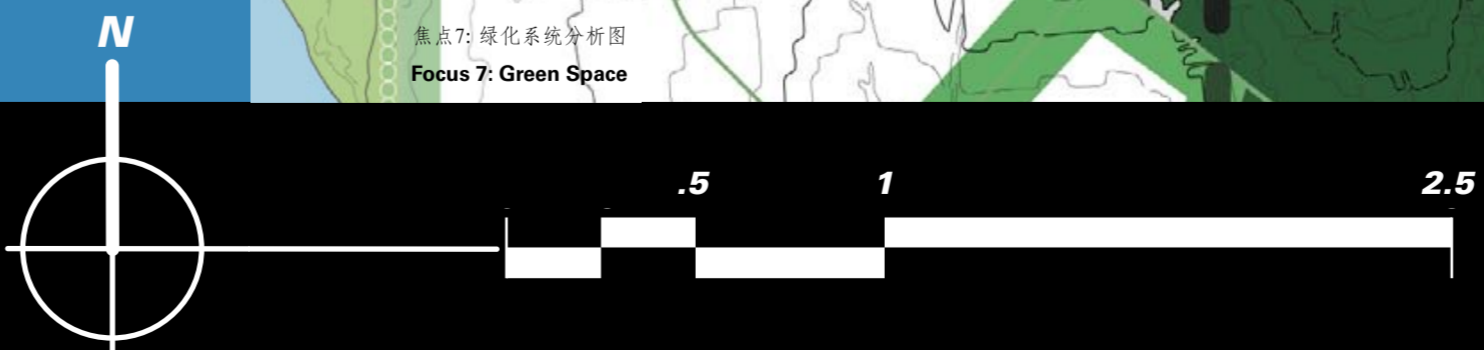
焦点7: 用地指标及控规图  
Focus 7: Planned Land Use

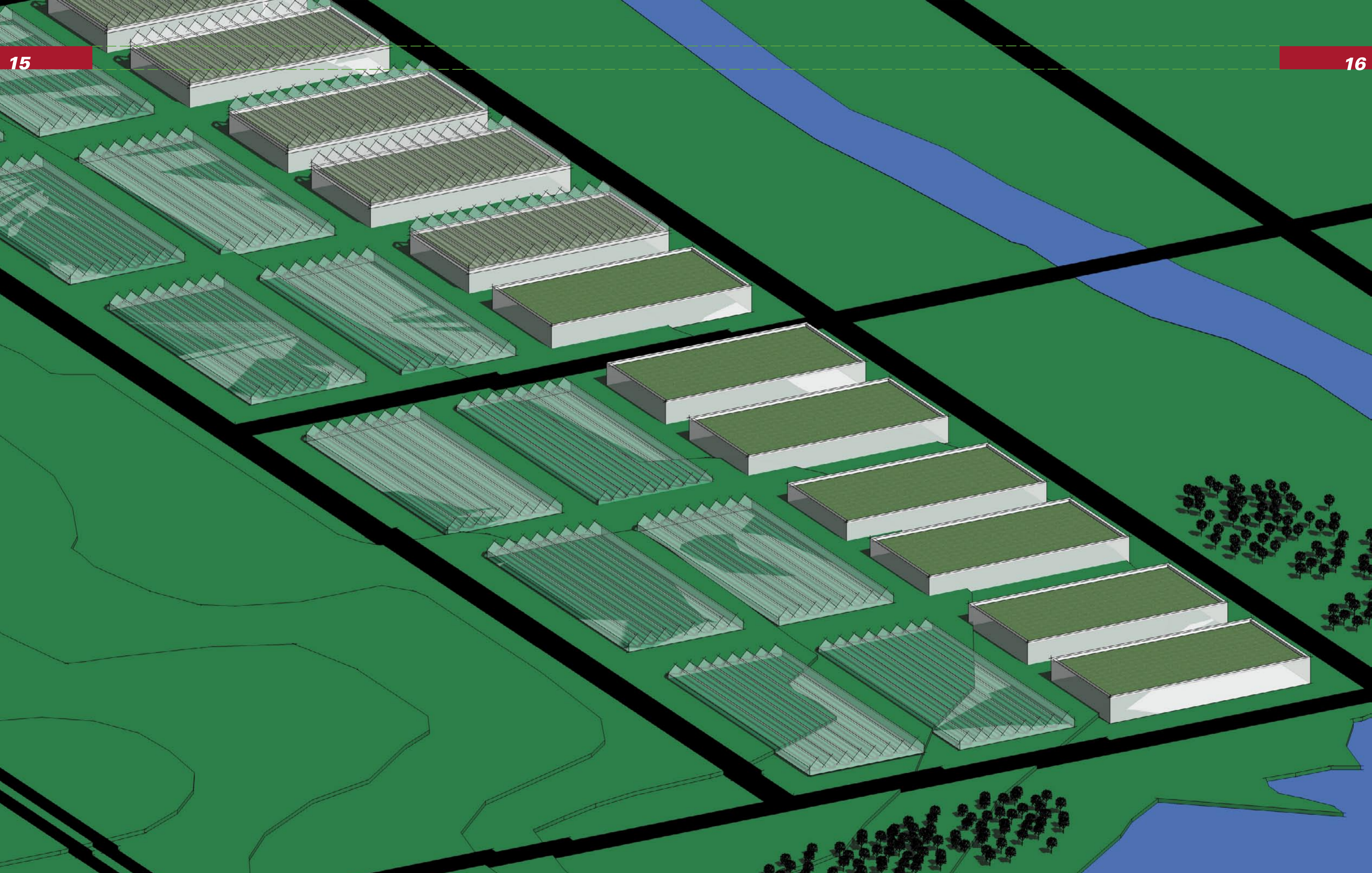


焦点7: 空间景观分析图  
Focus 7: Spatial Landscape



焦点7: 绿化系统分析图  
Focus 7: Green Space





1:1000

焦点7: 代表设计构思和创意的效果图

Focus 7: Design Model

ROBERT  
EDSON  
SWAIN  
A I A

## 参考书目 Bibliography

- Alexander, C. (1979). *The Timeless Way of Building*. New York: Oxford University Press.
- Balshone, B. (1975). *Bicycle Transit, Its Planning and Design*. New York: Praeger Publishers.
- Beatley, T. (2000). *Green Urbanism: Learning From European Cities*. Washington, D.C.: Island Press.
- Brayer, M and Simonot, B. (2003) *ArchiLab's Earth Buildings: Radical Experiments in Land Architecture*. London: Thames & Hudson Ltd.
- Doxiadis Associates, Inc. (1971). *Campus Planning in an Urban Area: A Master Plan for Rensselaer Polytechnic Institute*. New York, Washington, London: Praeger Publishers.
- Lyle, J. (1999). *Design for Human Ecosystems: Landscape, Land Use, and Natural Resources*. Washington, D.C, Covelo, CA: Island Press.
- Redactive, O. (2002). *City Branding: Image Building & Building Images*, Rotterdam: Nai Uitgevers/Publishers.
- Register, R. (2002). *Eco Cities: Building Cities in Balance With Nature*. Berkeley, California: Berkeley Hills Books.
- Wilhide, E. (2002). *Eco: An Essential Sourcebook for Environmentally Friendly Design and Decoration*. New York: Rizzoli International Publications, Inc.
- Wright, D. (2001). *The History of China*. Westport, CT, London: Greenwood Press.
- Zimmer, G, G, Frasca Partnership (1991). *The Master Plan for the Capitol of the State of Washington*. Washington State Department of General Administration.

### Internet Resources:

- Beyond Sprawl: New Patterns of Growth to Fit the New California:  
<http://www.rut.com/misc/beyondSprawl.html>
- China Oceanographic Information Network:  
<http://www.coi.gov.cn/eindex.html>" <http://www.coi.gov.cn/eindex.html>
- Exploratory Analysis of Suburban Land Cover and Population Density in the U.S.A.:  
[http://sedac.ciesin.org/urban\\_rs/IEEE\\_PozziSmall2001.pdf](http://sedac.ciesin.org/urban_rs/IEEE_PozziSmall2001.pdf)
- Germany boost wind power:  
<http://news.bbc.co.uk/1/hi/world/europe/1765054.stm>" <http://news.bbc.co.uk/1/hi/world/europe/1765054.stm>
- How everyday things are made: Industrial manufacturing tours:  
<http://manufacturing.stanford.edu/>
- Maps of China:  
<http://www.chinapage.com/map/map.html>
- New Changan: Urban Form and Structure:  
<http://www.townsnets.com/changan.htm>" <http://www.townsnets.com/changan.htm>
- National Oceanic and Atmospheric Administration: COASTAL RESOURCES ASSESSMENT BRANCH:  
<http://spo.nos.noaa.gov/>  
<http://www.coi.gov.cn/projects/us-china/> (English)  
[http://www.coi.gov.cn/projects/us-china/about\\_page/about.htm](http://www.coi.gov.cn/projects/us-china/about_page/about.htm) (Chinese)
- Population density in selected Chinese provinces and countries of comparable population size:  
[http://www.iiasa.ac.at/Research/LUC/ChinaFood/data/pop/pop\\_3.htm](http://www.iiasa.ac.at/Research/LUC/ChinaFood/data/pop/pop_3.htm)
- Qingdao area information:  
<http://www.qd.sd.cn/>" <http://www.qd.sd.cn/>
- Seattle City Light power supply:  
<http://www.cityofseattle.net/light/aboutus/customerguide/#PowSup>
- The Changing City: Vancouver in 1978 and 2003:  
<http://www.city.vancouver.bc.ca/commsvc/fade/fade.htm>
- The OPET e-bulletin on renewable energy:  
<http://www.opet.dk/bulletin/march2002/E-bulletin-no4-2002.htm>
- Tuscany population density:  
<http://www.fact-index.com/t/tu/tuscany.html>
- University of Urbino, Italy:  
<http://www.uniurb.it/Welcome.html>
- US Urbanized Areas: Percentage of Land Area by Population Density:  
<http://www.demographia.com/db-90densbypc.htm>
- Wind Energy is Far More Economical than Plutonium:  
<http://www.ieer.org/reports/wind/wind-pr.html>
- Wind Power Set to Become World's Leading Energy Source:  
<http://www.earth-policy.org/Updates/Update24.htm>
- World Wind Energy Generating Capacity  
[http://www.earth-policy.org/Updates/Update24\\_data.htm](http://www.earth-policy.org/Updates/Update24_data.htm)