

琅琊

Robert Edson Swain, AIA
规划建筑
Planning Architect

Robert Klengler
责任编辑
Managing Editor

Geoffrey Casey
图表设计
Graphic Design

Neal Panchuk
3D模型
3D Modeling

琅琊 LANG YA

一个可持续发展的明天、一个繁荣兴旺的未来

A SUSTAINABLE AND PROSPEROUS FUTURE

青岛市规划局给了我们一次机会参与青岛卫星城镇—琅琊组团的总体规划,我想在此表示感谢。我对夏耕市长和市政府领导

关于建设生态型可持续发展的青岛的远见卓识深感赞同和钦佩。青岛市致力于对历史遗迹、环境、自然景观的保护和综合

管理,以及在可持续发展方面的投入和所取得进展,令人惊叹不已。这一切都为我们“认真思索、细心体会、准确定位、富有灵

感”的设计创作埋下伏笔。它也将深深地激励着我为青岛市的

宏伟发展蓝图贡献我的才智。



I wish to thank the Qingdao Urban Planning & Programming Bureau for this opportunity to participate in this transformation of Qingdao Satellite City Group — Lang Ya. I deeply value, respect and appreciate Mayor Xia Geng's central leadership and powerful vision towards an ecological and sustainable Qingdao! The commitment to a balance of historic preservation, environmental concern, landscape beauty and phenomenal progress in sustainable development is remarkable. The knowledge, experience and insights of my visits to Qingdao has prompted me to offer these concepts to facilitate your rapid growth.

咨询师
Advisors

Antonio Apicella, Ph.D.,
University of Naples, Italy

Leigh Bloom, EDGE, Ilc,
Seattle, WA, USA

Stefano Catalani, Art
Curator, Seattle, WA, USA

Susan Corcos, President,
FREEDOM, Athens, Greece

D. Gregg Doyle, Ph.D., AICP,
Cal Poly State University, USA

Weihe Guan, Weyerhaeuser,
Tacoma, WA, USA

John Scott Lee,
Skagit County, WA, USA

Wesley Pierce, EDGE, Ilc,
Seattle, WA, USA

John Sands, Entrepreneurial
Studies, WWU, USA

Ming-Lee Yuan, EDGE, Ilc,
Seattle, WA, USA

Yegang Wu, Eden
Development, Qingdao, China

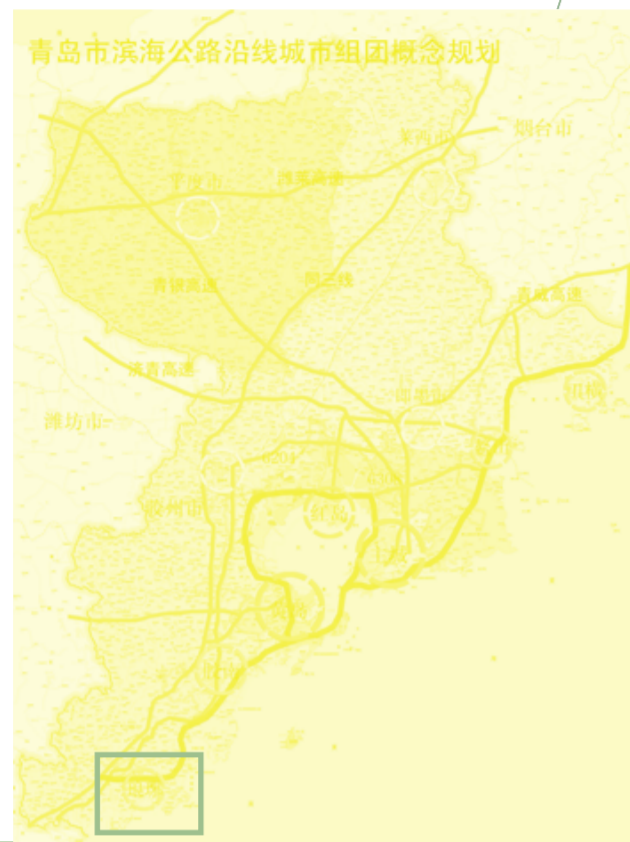
研究助理
Research Assistant

Brendon Haggerty, UW,
Seattle, WA, USA

翻译服务
Translation Services

Daniel Fan Baocai,
Qingdao, China

Weihe Guan, Weyerhaeuser
Tacoma, WA, USA



- 区域位置分析图 **i** Regional Location
- 用地现状图 **1** Existing Land Use
- 土地利用规划图 **3** Planned Land Use
- 规划结构图 **5** Comprehensive Planning Structure and Integration
- 空间形态分析图: 地形 **7** Spatial Formation Analysis: Topography
- 空间形态分析图: 水文流域 **9** Spatial Formation Analysis: Drainage
- 公共设施规划图 **11** Public Facilities Plan
- 道路交通系统规划图 **13** Transportation System Plan
- 生态与风貌景观规划图 **15** Ecology, View and Landscape Plan
- 各专业基础设施工程规划图 **17** Infrastructure Plan
- 分期建设模式指引图 **19** Development Sequence Guidelines
- 参考书目 **21** Bibliography

目录
Contents

区域位置分析图
Regional Location

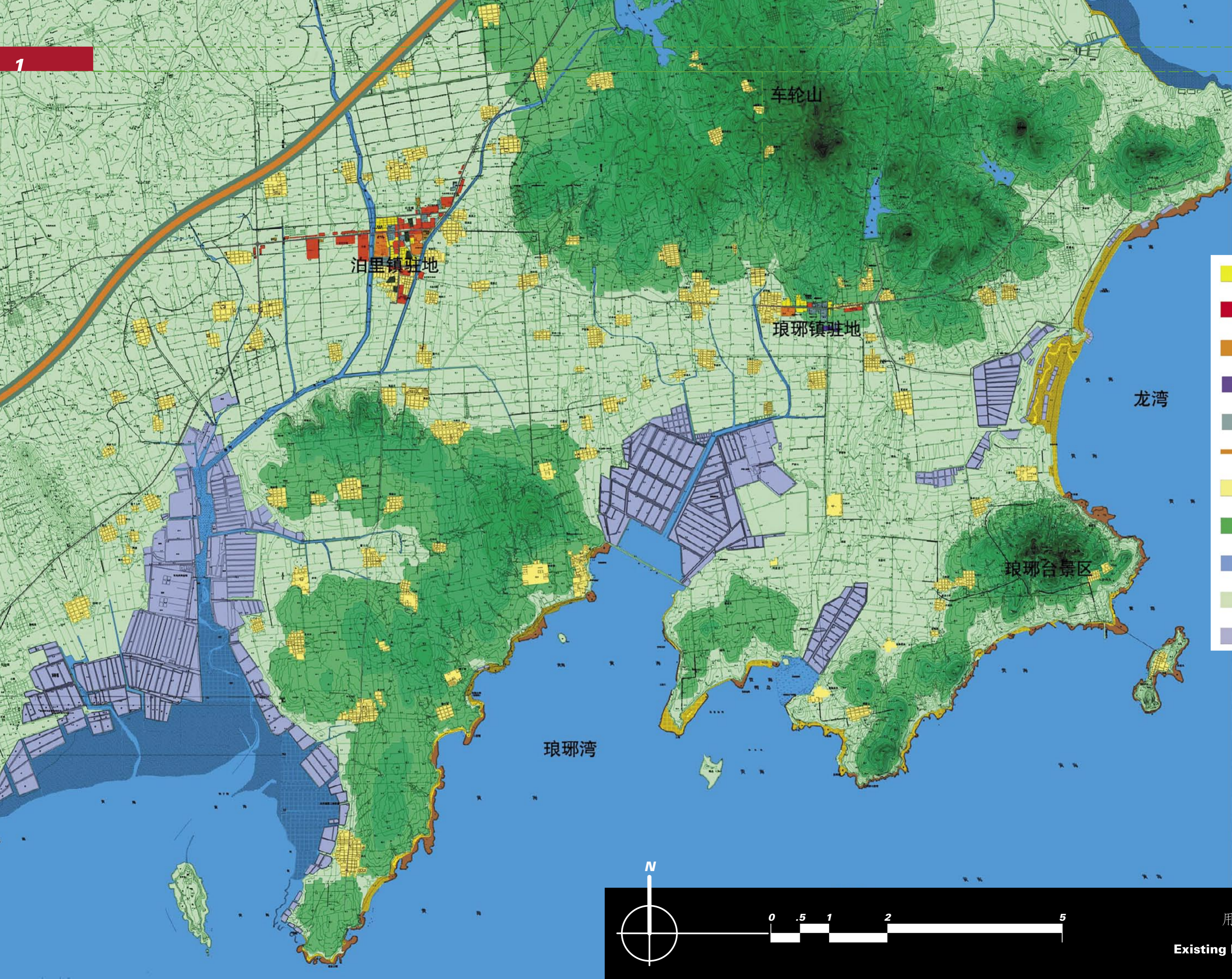
每个灵魂都会为自己建个家,而在这个家的外面是一个世界,在世界的外面是天堂。要知道这个世界是为你而存在的,因此,建一个你所拥有的世界吧。

腊甫·瓦杜·厄姆森。

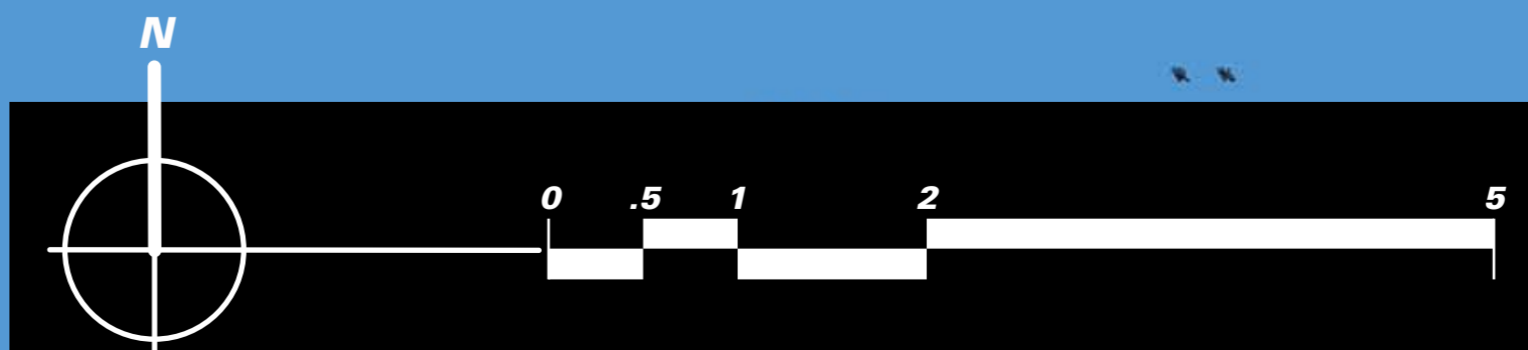
Every spirit builds itself a house, beyond its house a world, beyond its world a heaven. Know there that the world exists for you – build therefore your own world.

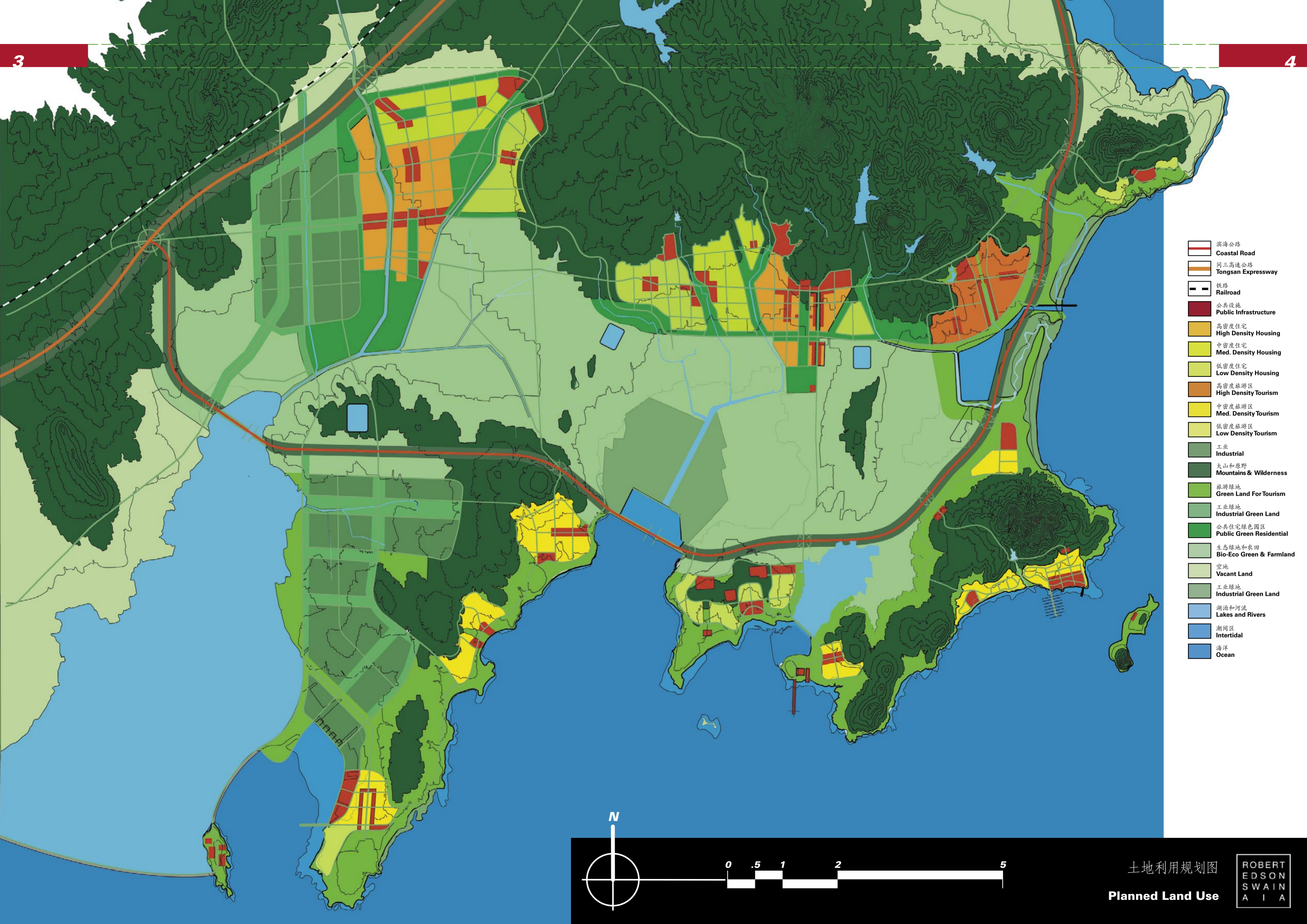
Ralph Waldo Emerson







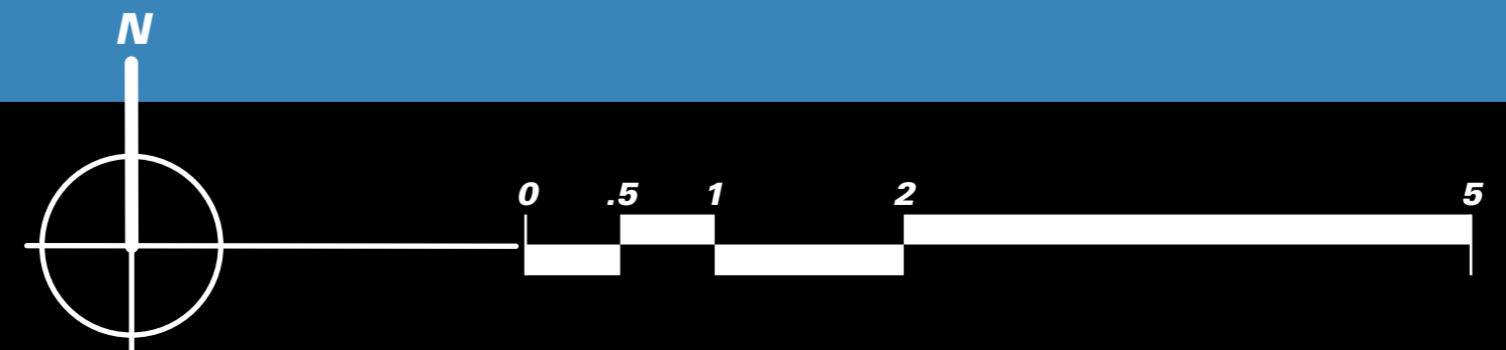


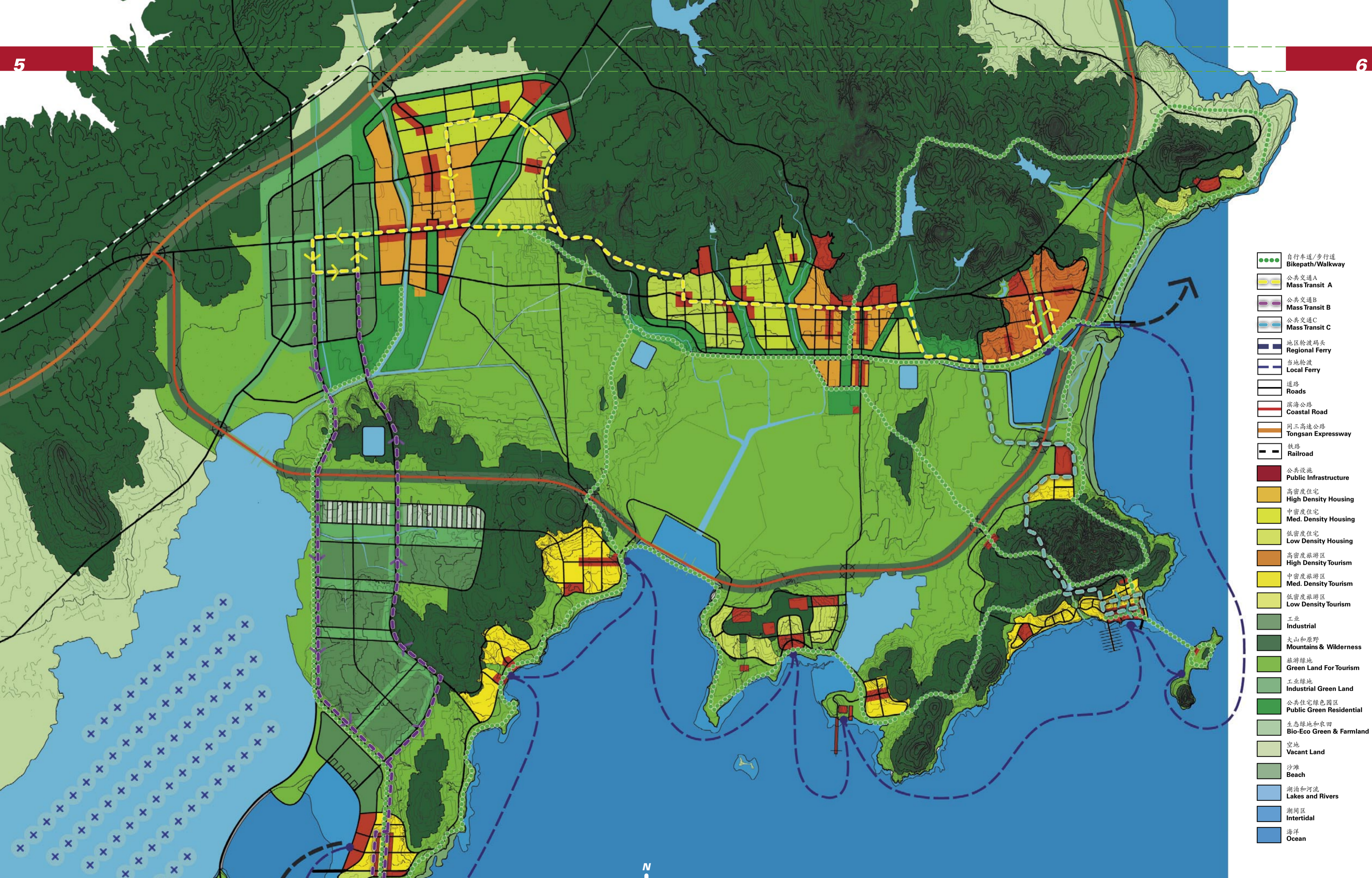
- 二类居住用地
Second Class Residential
- 公共设施用地
Public Infrastructure
- 教育科研用地
Scientific Research
- 仓储用地
Storage
- 产业用地
Industry
- 同三高速公路
Tongsan Expressway
- 村庄居住用地
Villages
- 生态绿地
Bio-eco Greenland
- 水域
Water Surface
- 空地
Vacant Land
- 滩涂
Sludge Area



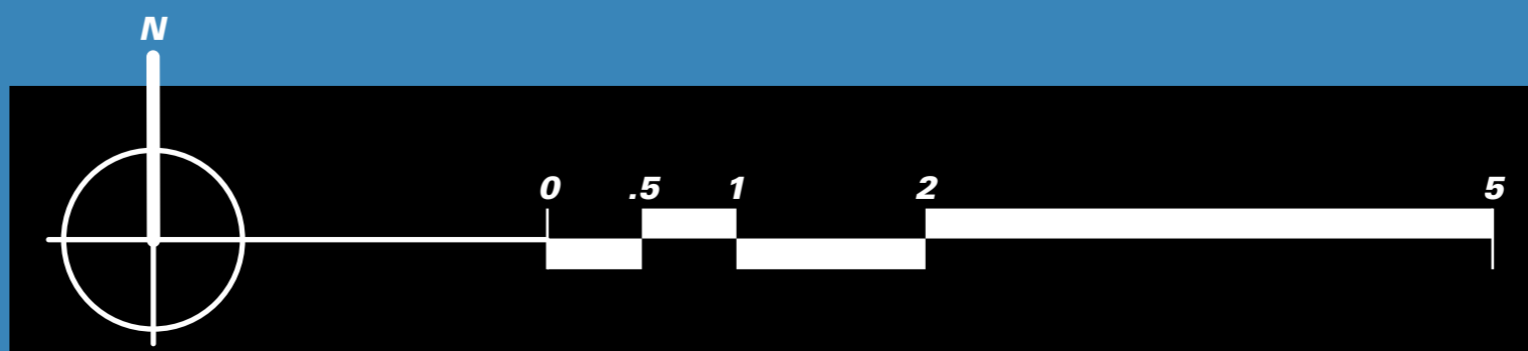


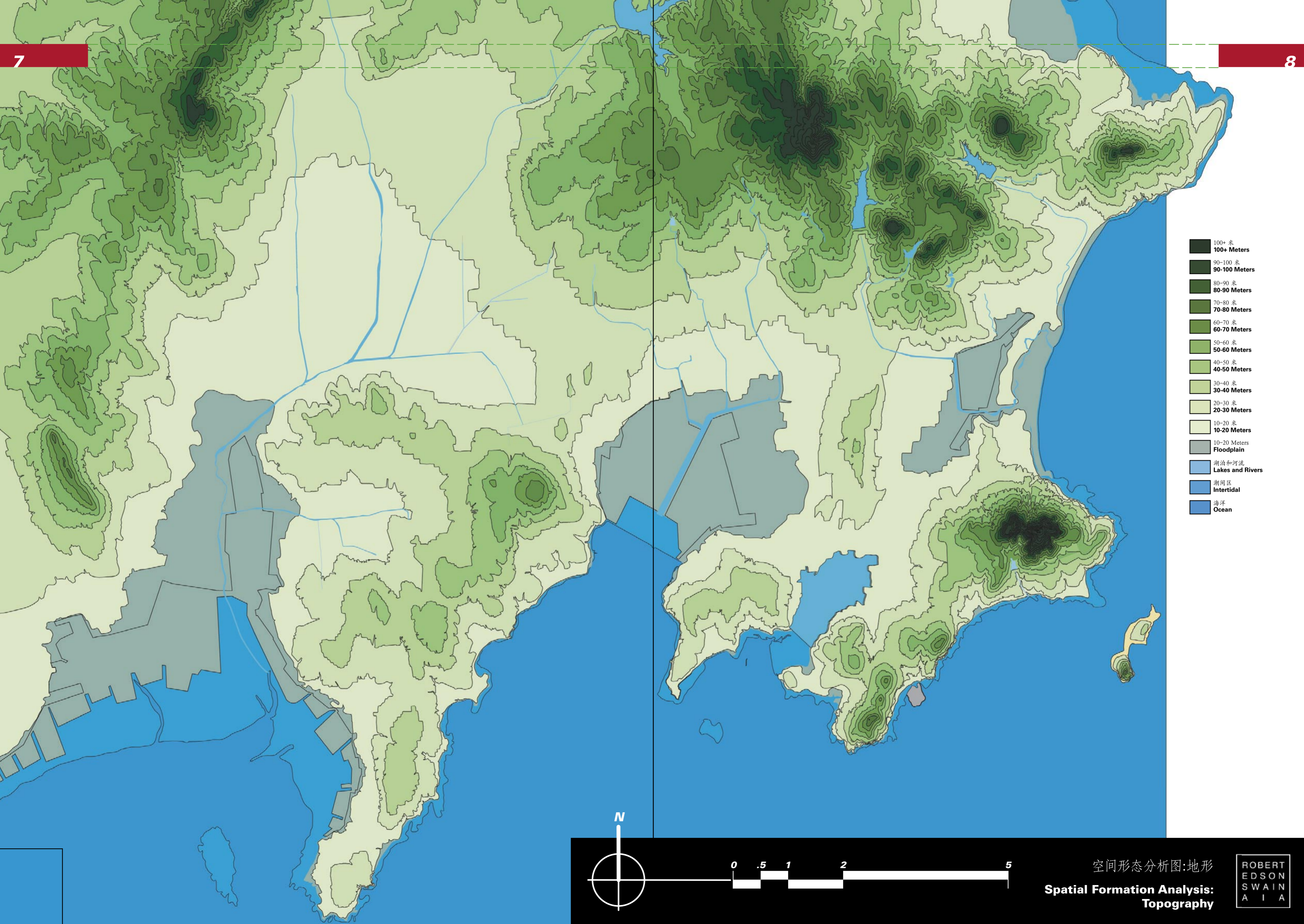
-  滨海公路
Coastal Road
-  甬三高速公路
Tongsan Expressway
-  铁路
Railroad
-  公共设施
Public Infrastructure
-  高密度住宅
High Density Housing
-  中密度住宅
Med. Density Housing
-  低密度住宅
Low Density Housing
-  高密度旅游区
High Density Tourism
-  中密度旅游区
Med. Density Tourism
-  低密度旅游区
Low Density Tourism
-  工业
Industrial
-  大山和原野
Mountains & Wilderness
-  旅游绿地
Green Land For Tourism
-  工业绿地
Industrial Green Land
-  公共住宅绿色园区
Public Green Residential
-  生态绿地和农田
Bio-Eco Green & Farmland
-  空地
Vacant Land
-  工业绿地
Industrial Green Land
-  湖泊和河流
Lakes and Rivers
-  潮间区
Intertidal
-  海洋
Ocean





- 自行车道/步行道
Bikepath/Walkway
- 公共交通A
Mass Transit A
- 公共交通B
Mass Transit B
- 公共交通C
Mass Transit C
- 地区轮渡码头
Regional Ferry
- 当地轮渡
Local Ferry
- 道路
Roads
- 滨海公路
Coastal Road
- 同三高速公路
Tongsan Expressway
- 铁路
Railroad
- 公共设施
Public Infrastructure
- 高密度住宅
High Density Housing
- 中密度住宅
Med. Density Housing
- 低密度住宅
Low Density Housing
- 高密度旅游区
High Density Tourism
- 中密度旅游区
Med. Density Tourism
- 低密度旅游区
Low Density Tourism
- 工业
Industrial
- 大山和原野
Mountains & Wilderness
- 旅游绿地
Green Land For Tourism
- 工业绿地
Industrial Green Land
- 公共住宅绿色园区
Public Green Residential
- 生态绿地和农田
Bio-Eco Green & Farmland
- 空地
Vacant Land
- 沙滩
Beach
- 湖泊和河流
Lakes and Rivers
- 潮间区
Intertidal
- 海洋
Ocean



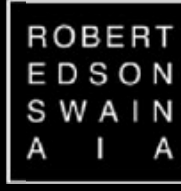


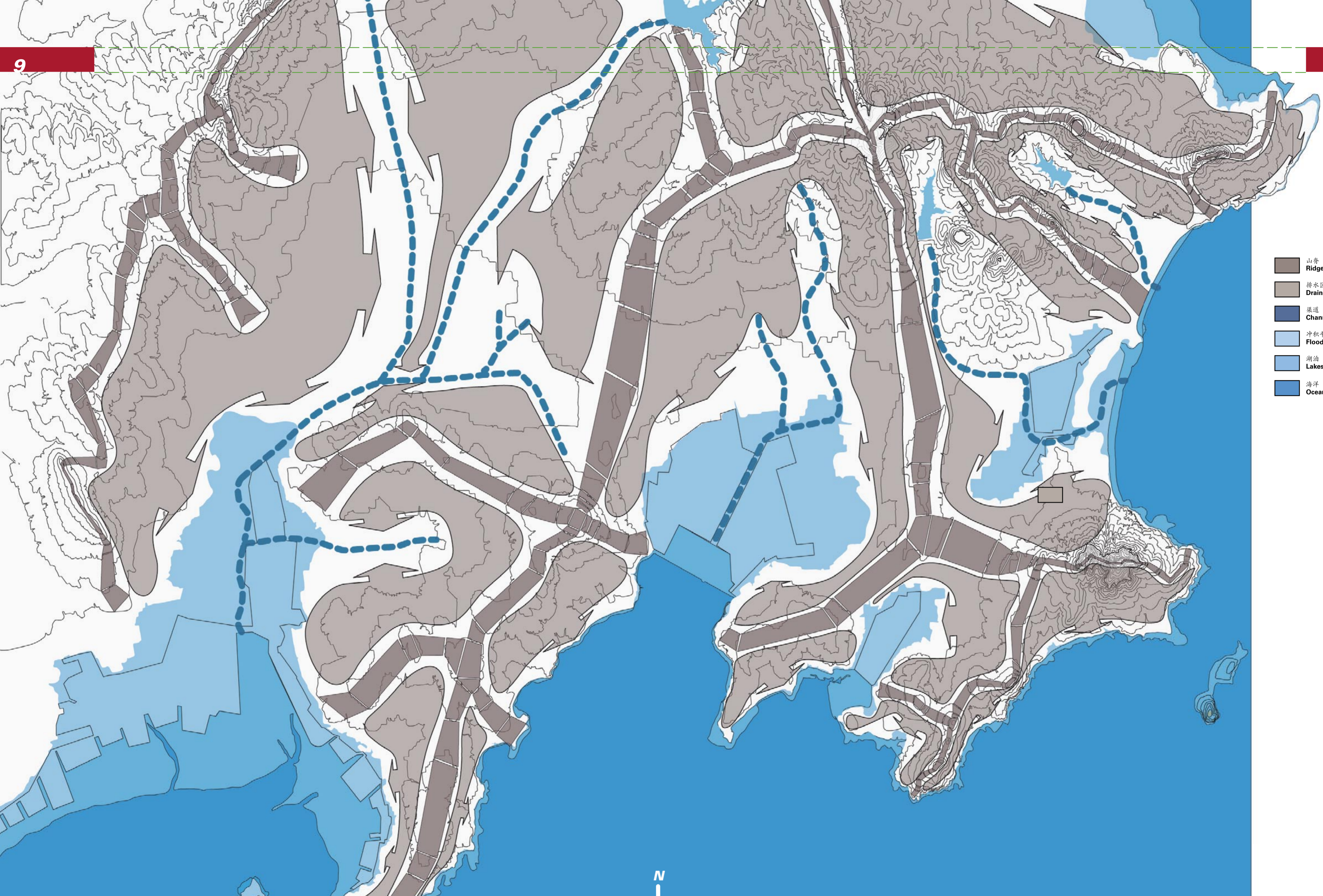
- 100+ 米
100+ Meters
- 90-100 米
90-100 Meters
- 80-90 米
80-90 Meters
- 70-80 米
70-80 Meters
- 60-70 米
60-70 Meters
- 50-60 米
50-60 Meters
- 40-50 米
40-50 Meters
- 30-40 米
30-40 Meters
- 20-30 米
20-30 Meters
- 10-20 米
10-20 Meters
- 10-20 Meters
Floodplain
- 湖泊和河流
Lakes and Rivers
- 潮间区
Intertidal
- 海洋
Ocean



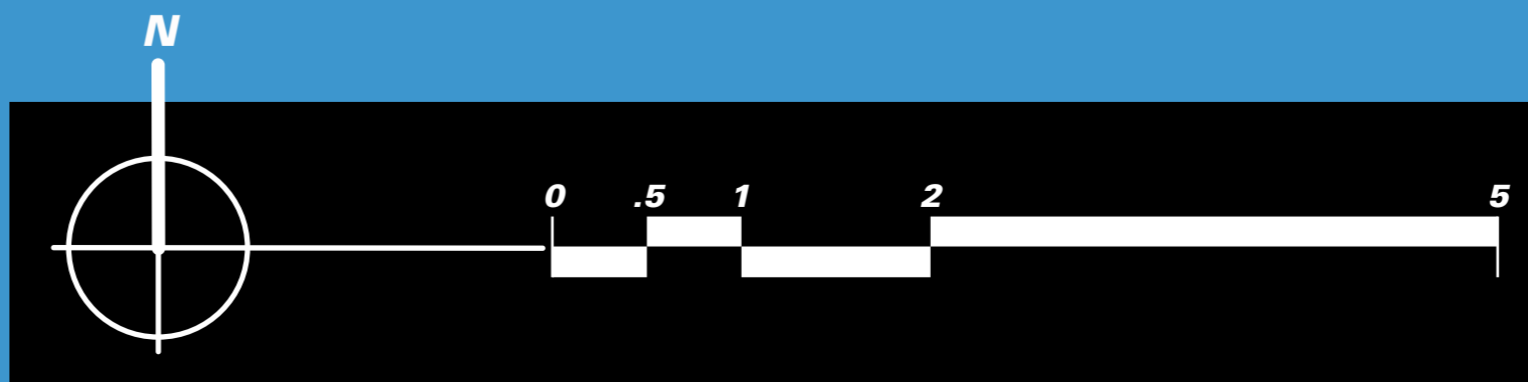
空间形态分析图:地形

Spatial Formation Analysis:
Topography





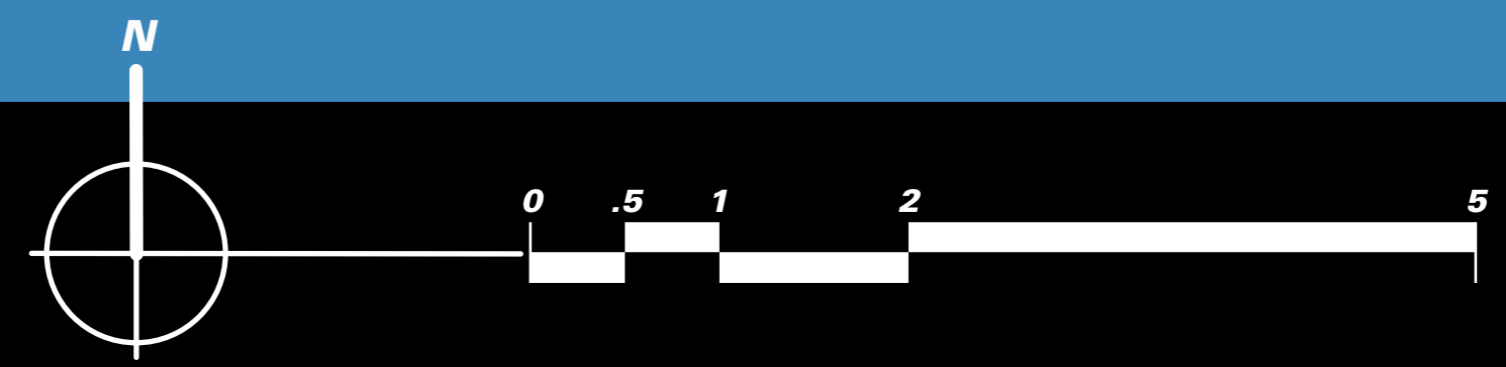
- 山脊
Ridges
- 排水区
Drainage
- 渠道
Channel
- 冲积平原
Floodplain
- 湖泊
Lakes
- 海洋
Ocean



空间形态分析图:水文流域

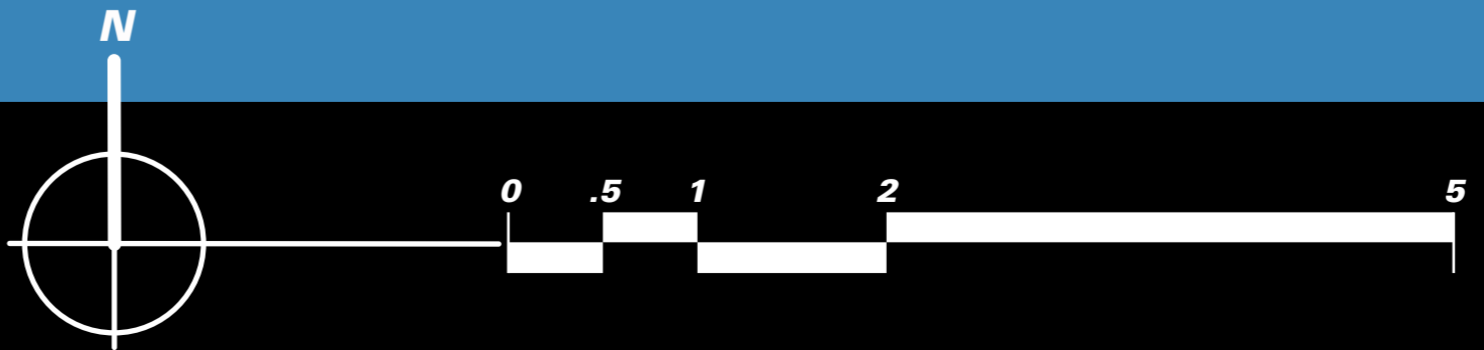


- 自行车道/步行道
Bikepath/Walkway
- 公共交通A
Mass Transit A
- 公共交通B
Mass Transit B
- 公共交通C
Mass Transit C
- 地区轮渡码头
Regional Ferry
- 当地轮渡
Local Ferry
- 道路
Roads
- 滨海公路
Coastal Road
- 同三高速公路
Tongsan Expressway
- 铁路
Railroad
- 公共设施
Public Infrastructure
- 大山和原野
Mountains & Wilderness
- 旅游绿地
Green Land For Tourism
- 公共住宅绿色园区
Public Green Residential
- 工业绿地
Industrial Green Land
- 湖泊和河流
Lakes and Rivers
- 潮间区
Intertidal
- 海洋
Ocean



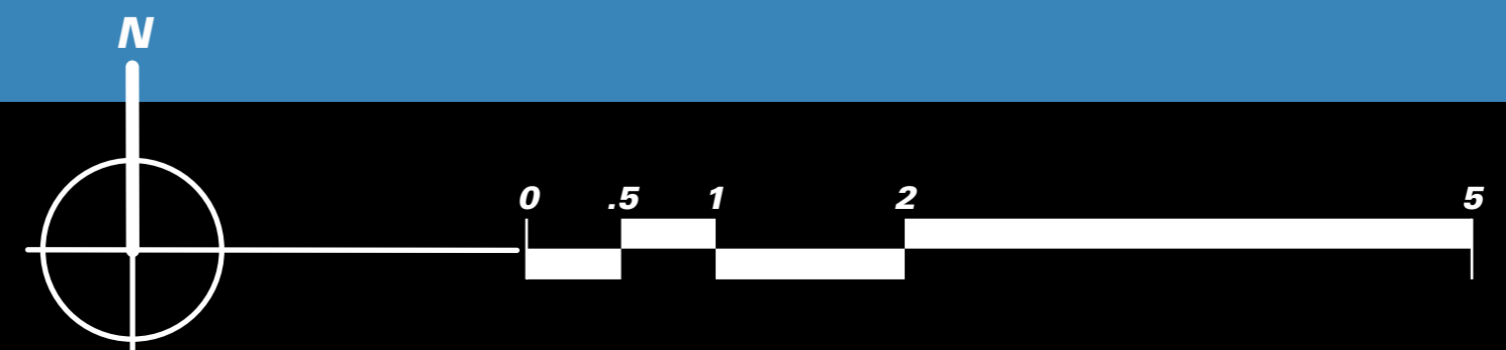


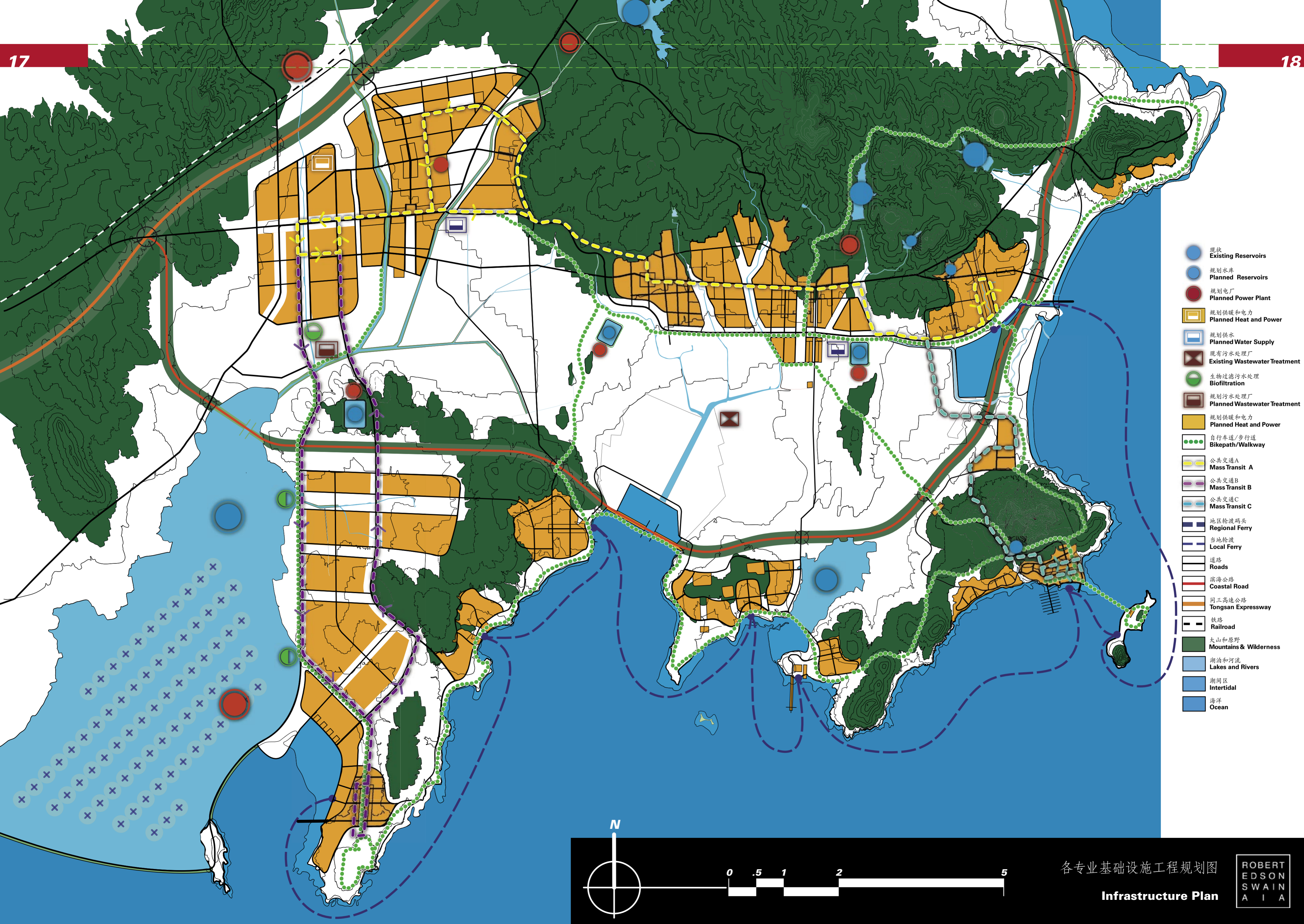
- 自行车道/步行道
Bikepath/Walkway
- 公共交通A
Mass Transit A
- 公共交通B
Mass Transit B
- 公共交通C
Mass Transit C
- 地区轮渡码头
Regional Ferry
- 当地轮渡
Local Ferry
- 道路
Roads
- 滨海公路
Coastal Road
- 同三高速公路
Tongsan Expressway
- 铁路
Railroad
- 1公里范围至客运轮渡
1 km Range for Ferry
- 1公里范围至轻轨
1 km Range for Light Rail
- 城市交通中心
Urban, For Transit
- 大山和原野
Mountains & Wilderness
- 湖泊和河流
Lakes and Rivers
- 潮间区
Intertidal
- 海洋
Ocean



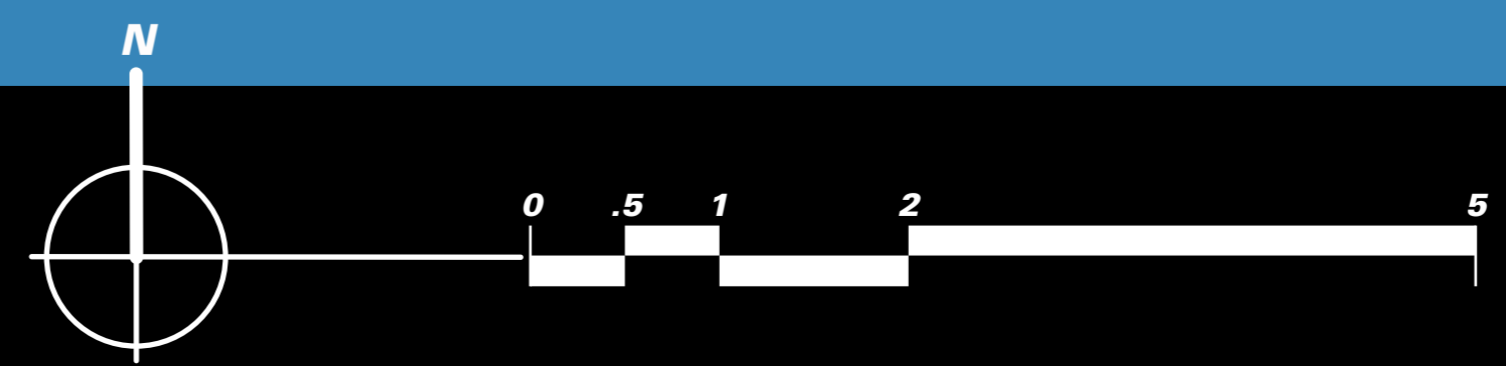


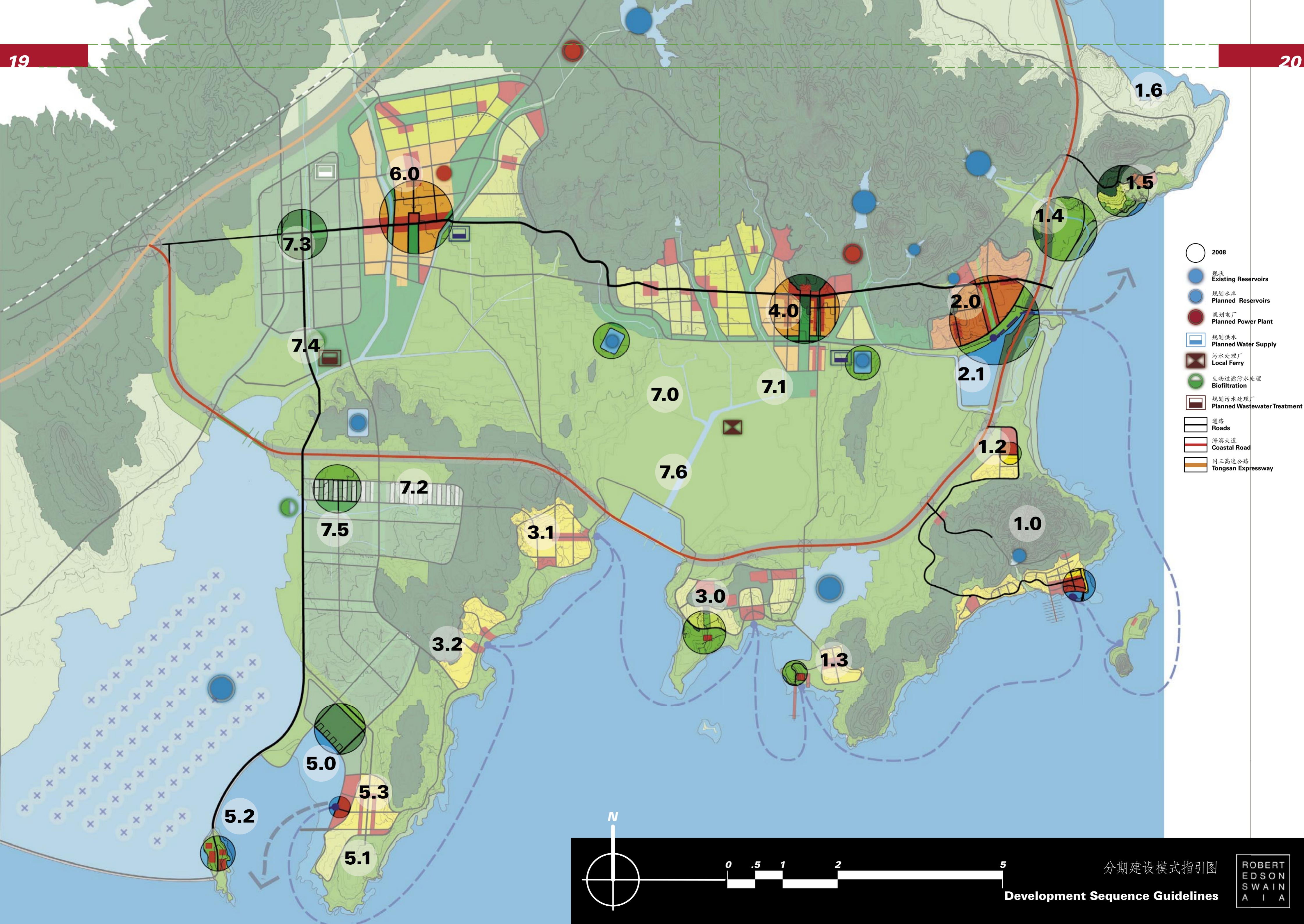
- 自行车道/步行道
Bikepath/Walkway
- 滨海公路
Coastal Road
- 同三高速公路
Tongsan Expressway
- 铁路
Railroad
- 工业
Industrial
- 大山和原野
Mountains & Wilderness
- 旅游绿地
Green Land For Tourism
- 工业绿地
Industrial Green Land
- 公共住宅绿色园区
Public Green Residential
- 生态绿地和农田
Bio-Eco Green & Farmland
- 空地
Vacant Land
- 沙滩
Beach
- 湖泊和河流
Lakes and Rivers
- 潮间区
Intertidal
- 海洋
Ocean





- 现状 Existing Reservoirs
- 规划水库 Planned Reservoirs
- 规划电厂 Planned Power Plant
- 规划供暖和电力 Planned Heat and Power
- 规划供水 Planned Water Supply
- 现有污水处理厂 Existing Wastewater Treatment
- 生物过滤污水处理 Biofiltration
- 规划污水处理厂 Planned Wastewater Treatment
- 规划供暖和电力 Planned Heat and Power
- 自行车道/步行道 Bikepath/Walkway
- 公共交通A Mass Transit A
- 公共交通B Mass Transit B
- 公共交通C Mass Transit C
- 地区轮渡码头 Regional Ferry
- 当地轮渡 Local Ferry
- 道路 Roads
- 滨海公路 Coastal Road
- 同三高速公路 Tongsan Expressway
- 铁路 Railroad
- 大山和原野 Mountains & Wilderness
- 湖泊和河流 Lakes and Rivers
- 潮间区 Intertidal
- 海洋 Ocean





参考书目 Bibliography

- Alexander, C. (1979). *The Timeless Way of Building*. New York: Oxford University Press.
- Balshone, B. (1975). *Bicycle Transit, Its Planning and Design*. New York: Praeger Publishers.
- Beatley, T. (2000). *Green Urbanism: Learning From European Cities*. Washington, D.C.: Island Press.
- Brayer, M and Simonot, B. (2003) *ArchiLab's Earth Buildings: Radical Experiments in Land Architecture*. London: Thames & Hudson Ltd.
- Doxiadis Associates, Inc. (1971). *Campus Planning in an Urban Area: A Master Plan for Rensselaer Polytechnic Institute*. New York, Washington, London: Praeger Publishers.
- Lyle, J. (1999). *Design for Human Ecosystems: Landscape, Land Use, and Natural Resources*. Washington, D.C, Covelo, CA: Island Press.
- Redactive, O. (2002). *City Branding: Image Building & Building Images*, Rotterdam: Nai Uitgevers/Publishers.
- Register, R. (2002). *Eco Cities: Building Cities in Balance With Nature*. Berkeley, California: Berkeley Hills Books.
- Wilhide, E. (2002). *Eco: An Essential Sourcebook for Environmentally Friendly Design and Decoration*. New York: Rizzoli International Publications, Inc.
- Wright, D. (2001). *The History of China*. Westport, CT, London: Greenwood Press.
- Zimmer, Gunsul, Frasca Partnership (1991). *The Master Plan for the Capitol of the State of Washington*. Washington State Department of General Administration.

Internet Resources:

- Beyond Sprawl: New Patterns of Growth to Fit the New California:
<http://www.rut.com/misc/beyondSprawl.html>
- China Oceanographic Information Network:
<http://www.coi.gov.cn/eindex.html>" <http://www.coi.gov.cn/eindex.html>
- Exploratory Analysis of Suburban Land Cover and Population Density in the U.S.A.:
http://sedac.ciesin.org/urban_rs/IEEE_PozziSmall2001.pdf
- Germany boost wind power:
<http://news.bbc.co.uk/1/hi/world/europe/1765054.stm>" <http://news.bbc.co.uk/1/hi/world/europe/1765054.stm>
- How everyday things are made: Industrial manufacturing tours:
<http://manufacturing.stanford.edu/>
- Maps of China:
<http://www.chinapage.com/map/map.html>
- New Changan: Urban Form and Structure:
<http://www.townsnets.com/changan.htm>" <http://www.townsnets.com/changan.htm>
- National Oceanic and Atmospheric Administration: COASTAL RESOURCES ASSESSMENT BRANCH:
<http://spo.nos.noaa.gov/>
<http://www.coi.gov.cn/projects/us-china/> (English)
http://www.coi.gov.cn/projects/us-china/about_page/about.htm (Chinese)
- Population density in selected Chinese provinces and countries of comparable population size:
http://www.iiasa.ac.at/Research/LUC/ChinaFood/data/pop/pop_3.htm
- Qingdao area information:
<http://www.qd.sd.cn/>" <http://www.qd.sd.cn/>
- Seattle City Light power supply:
<http://www.cityofseattle.net/light/aboutus/customerguide/#PowSup>
- The Changing City: Vancouver in 1978 and 2003:
<http://www.city.vancouver.bc.ca/commsvc/fade/fade.htm>
- The OPET e-bulletin on renewable energy:
<http://www.opet.dk/bulletin/march2002/E-bulletin-no4-2002.htm>
- Tuscany population density:
<http://www.fact-index.com/t/tu/tuscany.html>
- University of Urbino, Italy:
<http://www.uniurb.it/Welcome.html>
- US Urbanized Areas: Percentage of Land Area by Population Density:
<http://www.demographia.com/db-90densbypc.htm>
- Wind Energy is Far More Economical than Plutonium:
<http://www.ieer.org/reports/wind/wind-pr.html>
- Wind Power Set to Become World's Leading Energy Source:
<http://www.earth-policy.org/Updates/Update24.htm>
- World Wind Energy Generating Capacity
http://www.earth-policy.org/Updates/Update24_data.htm